

## **Części do przyczep i zabudów samochodowych**

---

**Fahrzeugbauteile**

**Truck and trailer bodies parts**

**SCAPOL**

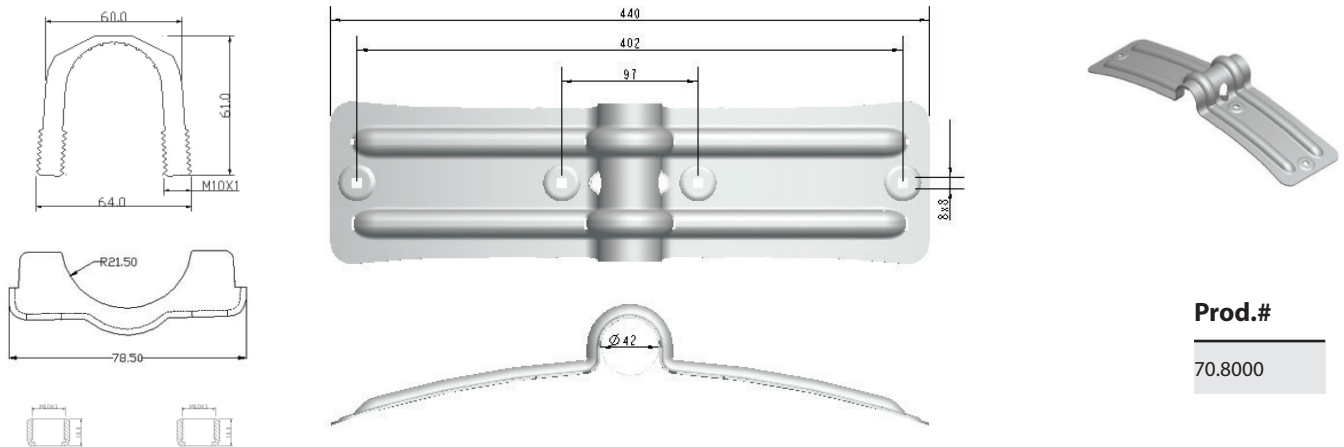
## SYSTEMY MOCOWAŃ BŁOTNIKÓW

### Kotfluegelhalter / Mud Guard Holders

#### Uchwyt błotnika z mocowaniem, ocynkowany lub lakierowany proszkowo.

Kotfluegelhalter-Set, galvinsch, verzinkt oder pulverbeschichtet.

Mudguard supplied with clamp, zinc plated or black powder coated.



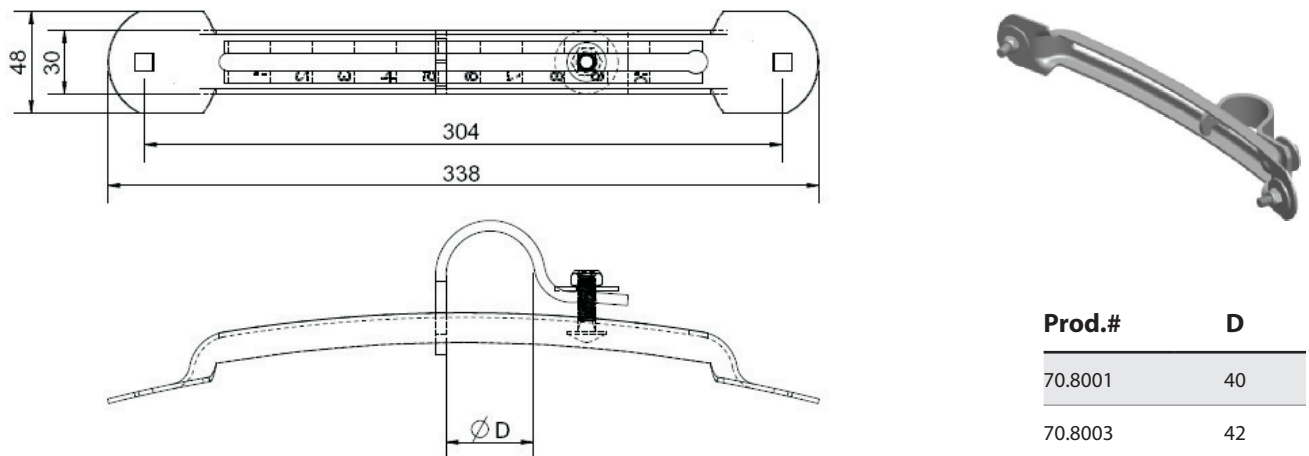
Prod.#

70.8000

#### Uchwyt błotnika z mocowaniem, ocynkowany lub lakierowany proszkowo.

Kotfluegelhalter-Set, galvinsch, verzinkt oder pulverbeschichtet.

Mudguard supplied with clamp, zinc plated or black powder coated.



Prod.#

D

70.8001

40

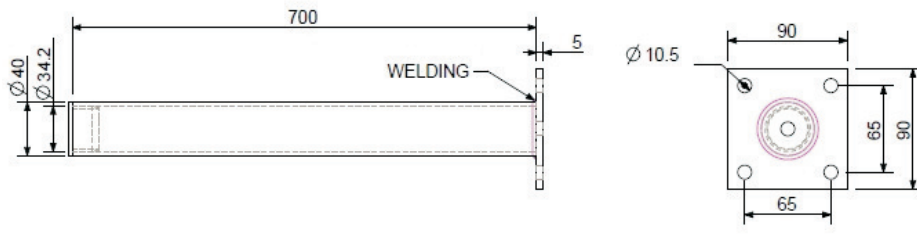
70.8003

42

**Rura mocowania błotnika, pomalowana farbą podkładową.**

Kotfeugelhalter.

Mud guard holder, with redoxide primer.



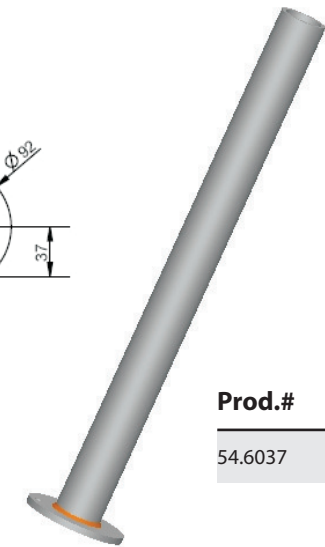
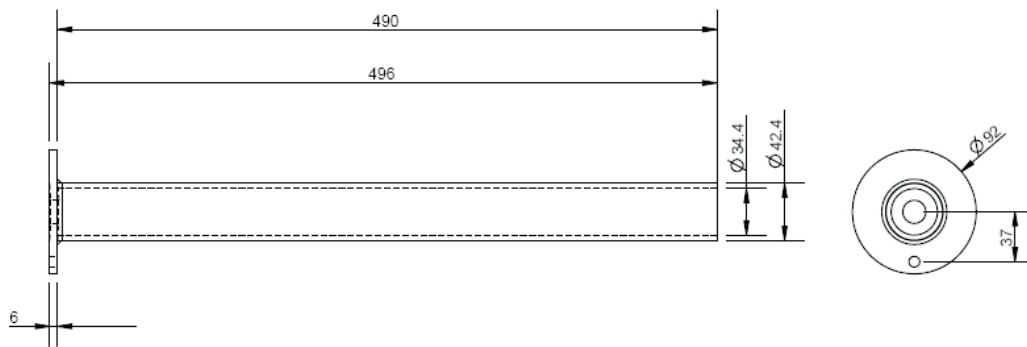
**Prod.#**

54.6034

**Rura mocowania błotnika, ocynkowana i pomalowana proszkowo.**

Kotfeugelhalter.

Mud guard holder, with zinc+Powder coated.



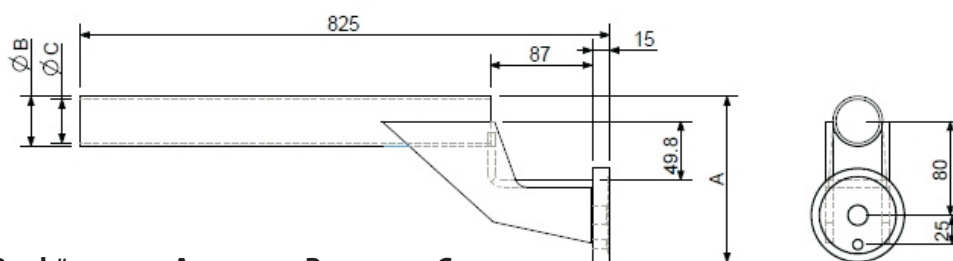
**Prod.#**

54.6037

**Rura mocowania błotnika, ocynkowana i pomalowana proszkowo.**

Kotfeugelhalter.

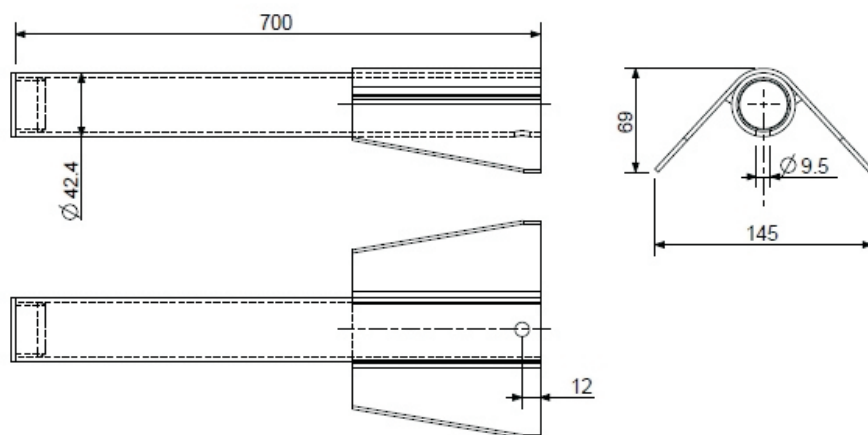
Mud guard holder, with zinc+Powder coated.



Prod.#	A	B	C
54.6035	141.4	42.4	40
54.6036	140	37.2	35

**Uchwyt błotnika.**

Mudgard holder.

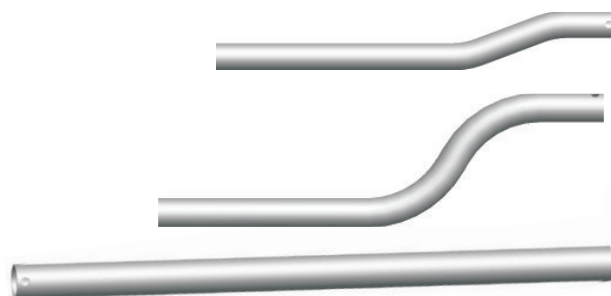
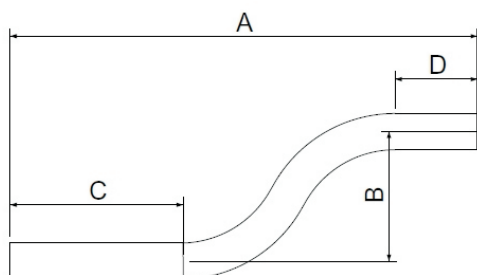
**Prod.#**

54.6033

**Rura mocowania błotnika, surowa.**

Kotfluegelhalterrohr, unbeschichtet.

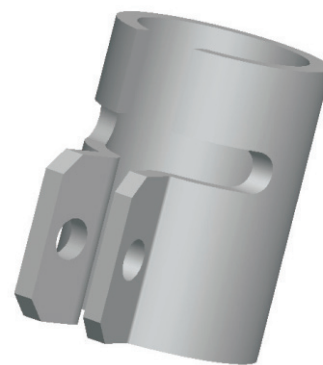
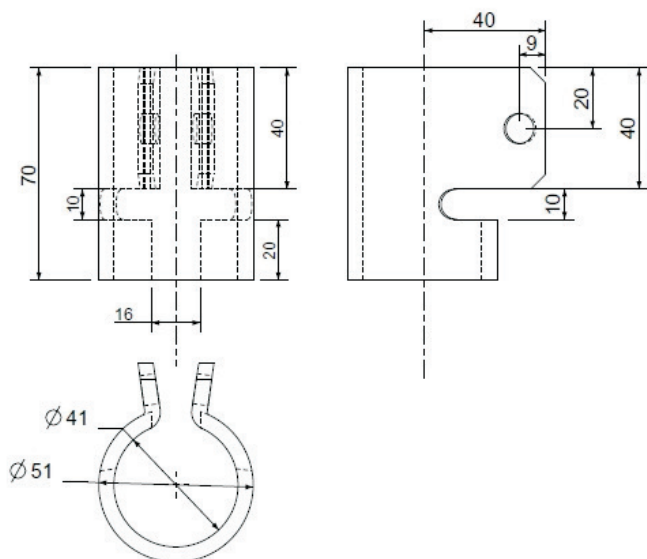
Mudguard Supports, uncoated.



Prod.#	ŚREDNICA	GRUBOŚĆ	A	B	C	D
70.8050	ø42	2.5	642	50	380	85
70.8051	ø42	2.5	540	150	200	95
70.8052	ø42	2.5	642.5	150	302.5	95
70.8053	ø42	2.5	755	150	415	95
70.8054	ø42	2.5	765	50	430	75
70.8055	ø42	2.5	705	150	425	80
70.8056	ø42	2.5	750	0	0	0
70.8057	ø40	2.5	700	0	0	0
70.8058	ø40	2.5	700	50	445	75
70.8059	ø40	2.5	700	125	335	80
70.8060	ø52	3	700	0	0	0
70.8031	ø52	3	700	140	432	73

**Uchwyt do ruru mocowania błotnika, do przyspawania.**

Kotfluegelhalter, Schweißbar.  
Mudguard Supports, Weldable.



**Prod.#**

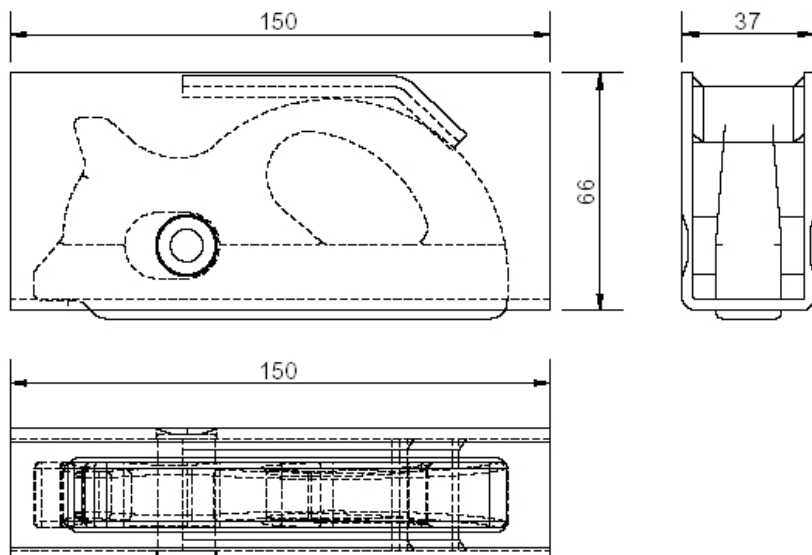
70.8070

**UCHWYTY MOCOWANIA ŁADUNKU**

**Zurring/ Cargo-Lashing Ring**

**Uchwyt mocowania ładunku wspawywany, uchylny, 2000kg.**

Zurring-Box, Einschweissversion, Ring klappbar, Belastbarkeit 2000kg.  
Cargo-Ring-Box, welding version, Ring is foldable, loadability 2000kg.



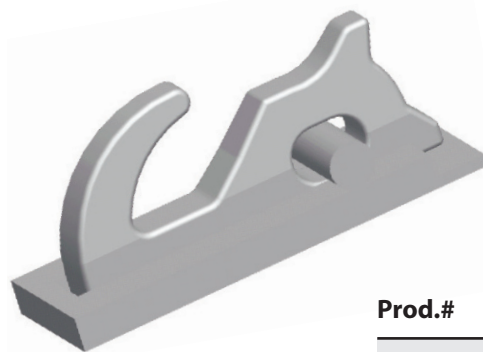
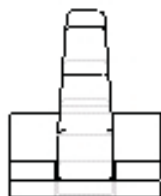
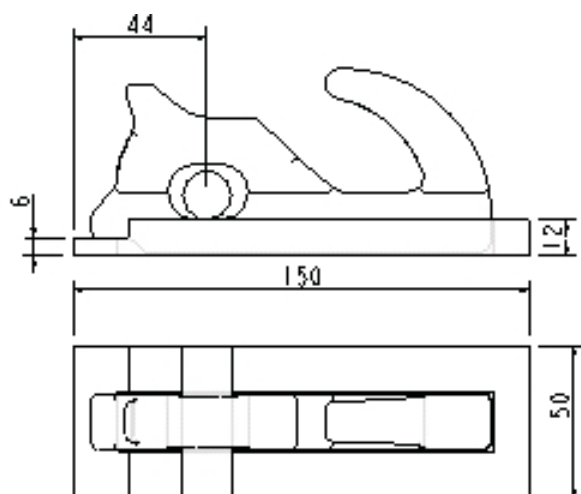
**Prod.#**

70.9000

**Uchwyt mocowania ładunku wspawany, uchylny, 2000kg.**

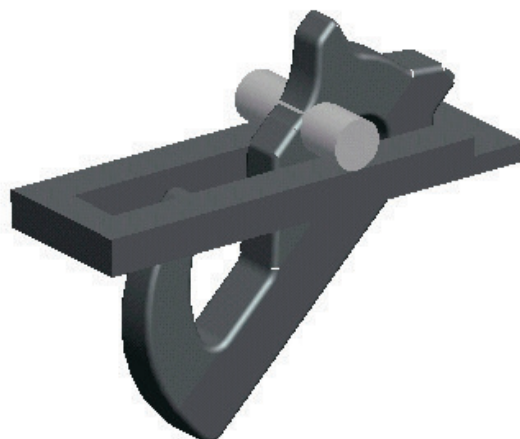
Zurring-Box, Einschweisversion, Ring klappbar, Belastbarkeit 2000kg.

Cargo-Ring-Box, welding version, Ring is foldable, loadability 2000kg.



**Prod.#**

70.9037



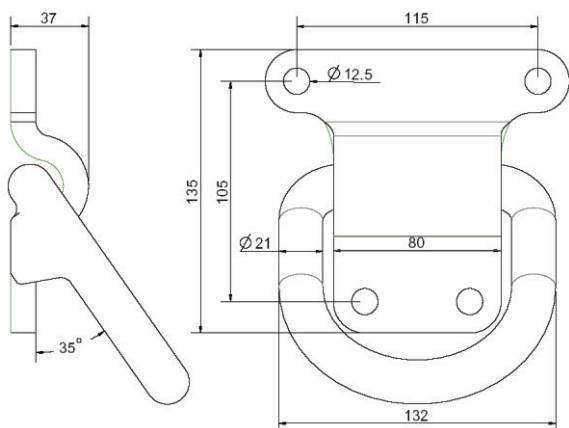
**Uchwyt mocowania ładunku z oczkiem, wytrzymałość 12000 kg, wersja przykręcana, ocynkowany.**

Zurring, mit U-Buegel, Belastbarkeit 12000kg, Schraubversion, verzinkt.

Cargo-Ring, with U-Clamp, Loadability 12000kg, srewable version, zinc plated.

**Homologacja nr NO-76231427/3, otrzymana przez TUV Niemcy.**

Homologation Number No-76231427/3, Recived From Tuv Sud Germany



**Prod.#**

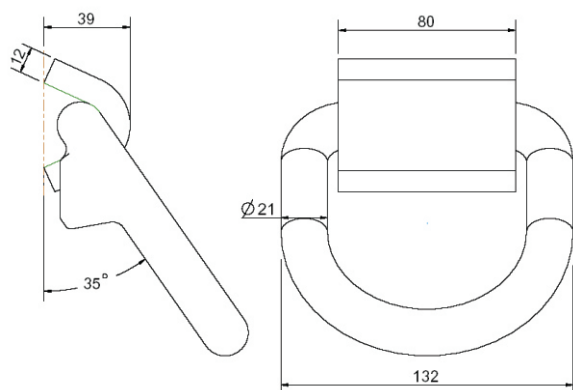
70.9001

**Uchwyt mocowania ładunku z oczkiem, wytrzymałość 12000 kg, wersja spawana, oczko ocynkowane.**

Zurring, mit U-Buegel, Belastbarkeit 12000kg, Schweissversion, Ring verzinkt.  
Cargo-Ring, with U-Clamp, Loadability 12000kg, welding version, Ring zinc plated.

**Homologacja nr NO-76231427/3, otrzymana przez TUV Niemcy.**

HOMOLOGATION NUMBER NO-76231427/3, RECIVED FROM TUV SUD GERMANY

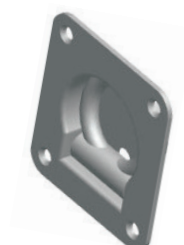
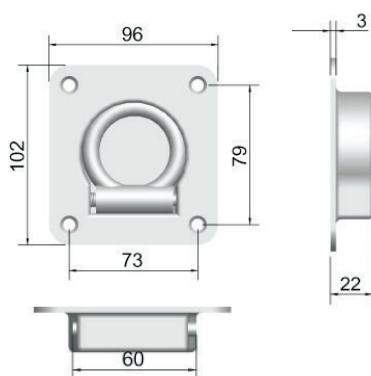


**Prod.#**

70.9002

**Uchwyt mocowania ładunku przykręcany, 1500kg, ocynkowany.**

Versenkter Zurring, verzinkt.  
Recessed Lasing-Ring, zinc plated (Load-1500Kg).

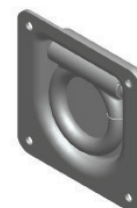
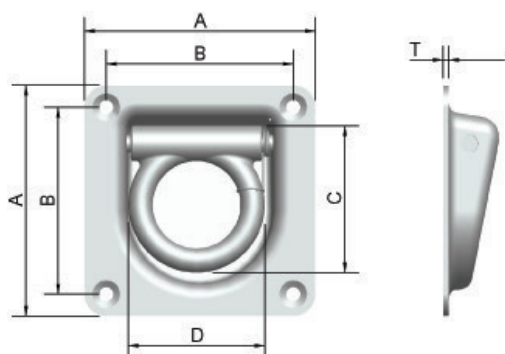


**Prod.#**

70.9003

**Uchwyt mocowania ładunku przykręcany, 800kg, ocynkowany.**

Versenkter Zurring, verzinkt.  
Recessed Lashing-Ring, zinc plated.

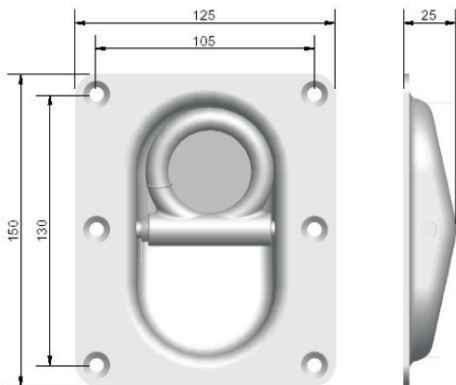


Prod.#	A	B	C	D	T
70.9005	125	100	69	72	3
70.9004	105	85	67	62	2.5

**Uchwyt mocowania ładunku przykręcany, 800kg, ocynkowany.**

Versenker Zurring, verzinkt.

Recessed Lashing-Ring, zinc plated.

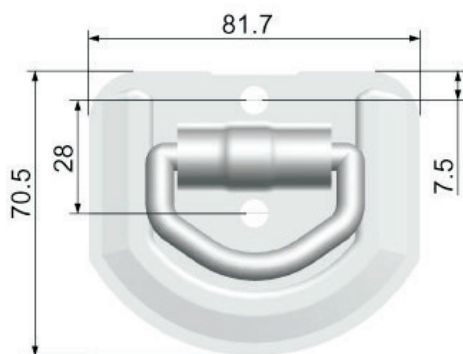
**Prod.#**

70.9010

**Uchwyt mocowania ładunku przykręcany, 250kg, ocynkowany.**

Versenker Zurring, verzinkt.

Cargo-Lashing Ring, White zinc plated

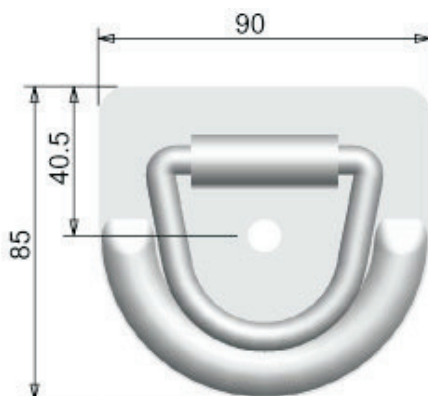
**Prod.#**

70.9023

**Uchwyt mocowania ładunku przykręcany, 500kg, ocynkowany.**

Versenker Zurring, verzinkt.

Cargo-Lashing Ring, White zinc plated

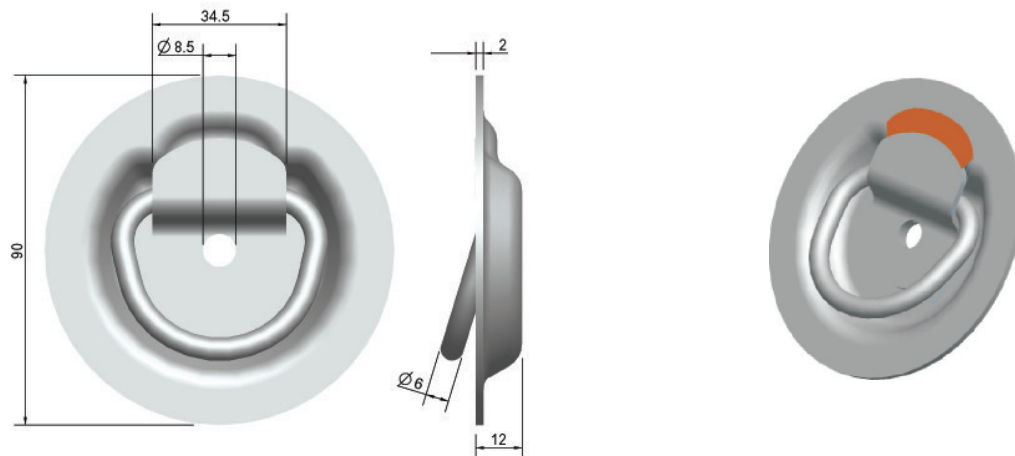
**Prod.#**

70.9012



**Uchwyt mocowania ładunku przykręcany, 300kg, ocynkowany.**

Versenkter Zurring, verzinkt.  
Cargo-Lashing Ring, White zinc plated.

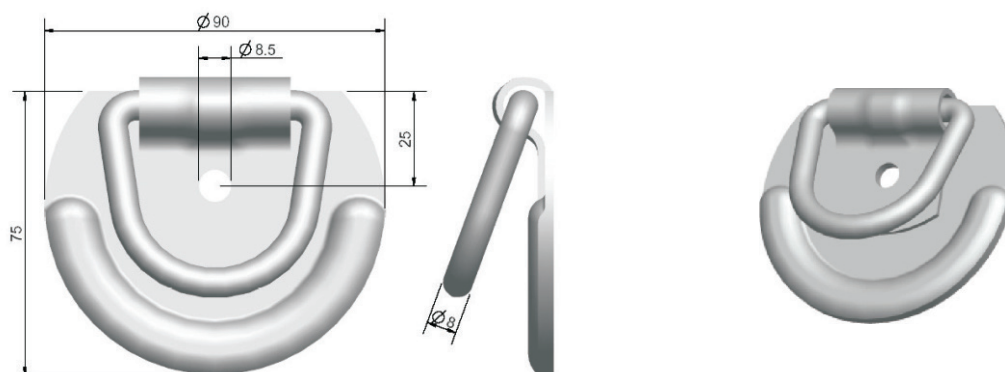


**Prod.#**

70.9016

**Uchwyt mocowania ładunku przykręcany, 500kg, ocynkowany.**

Versenkter Zurring, verzinkt.  
Cargo-Lashing Ring, White zinc plated.

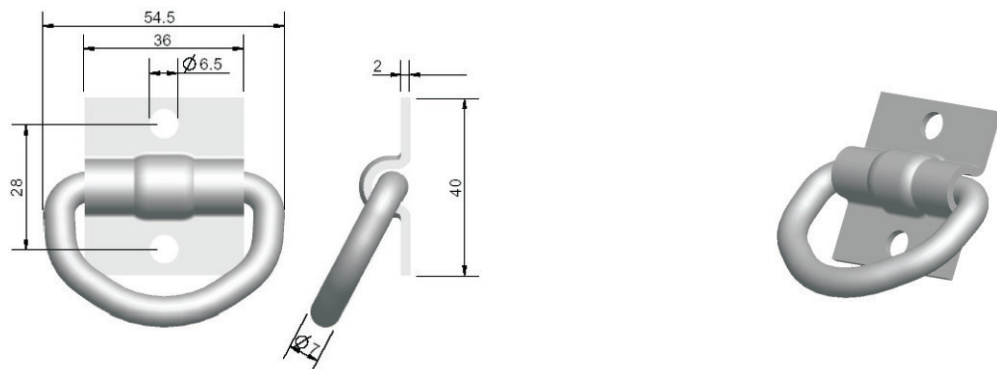


**Prod.#**

70.9013

**Uchwyt mocowania ładunku przykręcany, 250kg, ocynkowany.**

Versenkter Zurring, verzinkt.  
Cargo-Lashing Ring, White zinc plated.



**Prod.#**

70.9014

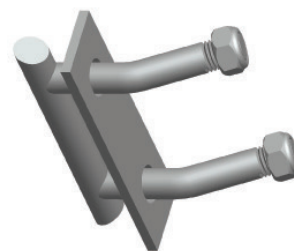
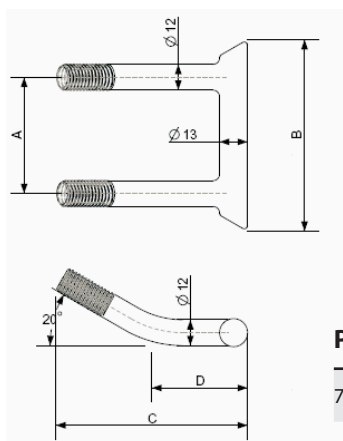
**Uchwyt mocowania ładunku, podwójne „T”, 2000kg, ocynkowany.**

Zurring-Doppel-T, galvansich verzinkt.

Cargo-Ring-Doppel-T, zinc plated.

**Homologacja nr NO-F2FC0001-00, otrzymana przez TUV Niemcy.**

Homologation Number No-F2fc0001-00, Recived From Tuv Sgs Germany For 70.9015.

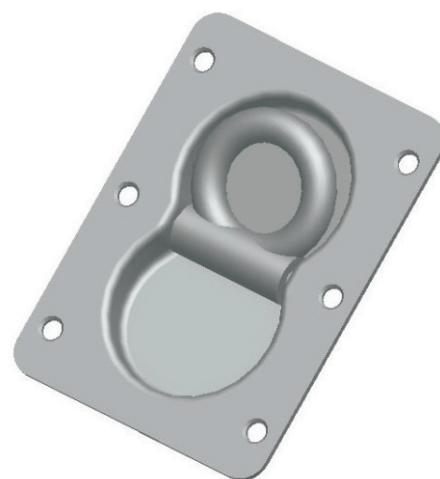
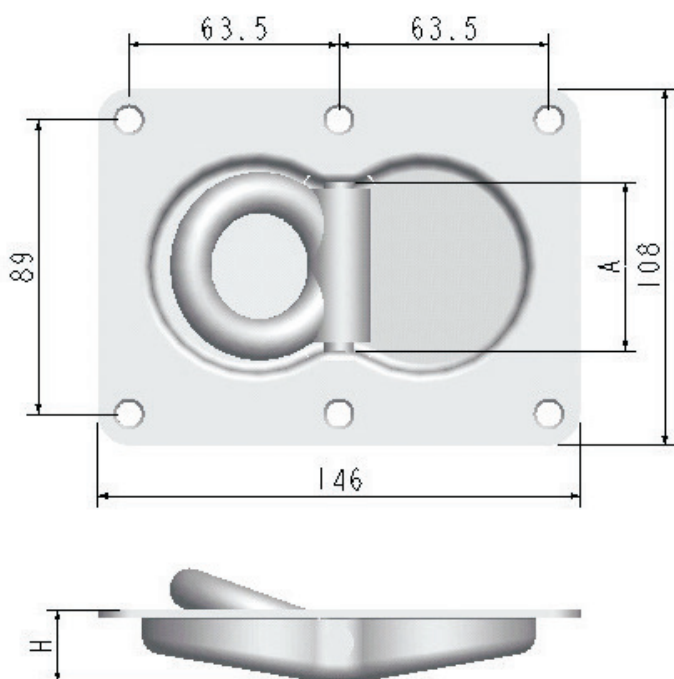


Prod.#	A	B	C	D	T	DESCRIPTION
70.9015	65	97	89	45	M12X1.75	WITHOUT NUT+PLATE

**Uchwyt mocowania ładunku przykręcany, 500kg, ocynkowany.**

Versenker Zurring, verzinkt

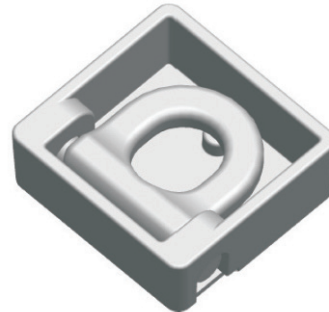
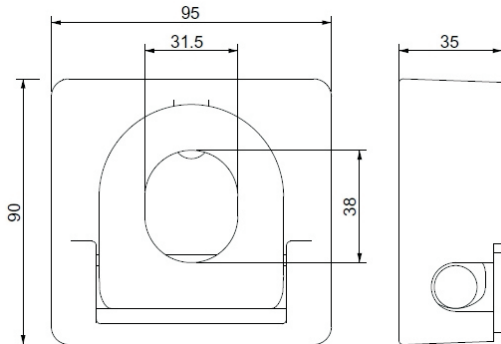
Cargo-Lashing Ring, White zinc plated.



Prod.#	A	B
70.9011	48	22
70.9024	56	

**Uchwyt mocowania ładunku, wytrzymałość 8000 kg, surowy.**

Versenkter Zurring, Belastbarkeit 8000kg, ohne Beschichtung.  
Cargo-Lashing Ring, Loadability 8000kgs, without coating.



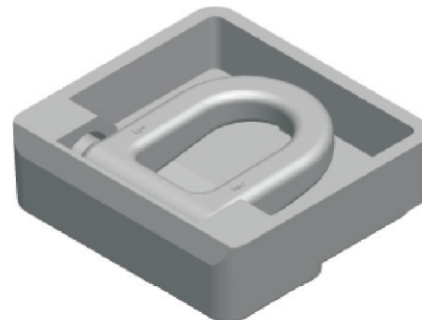
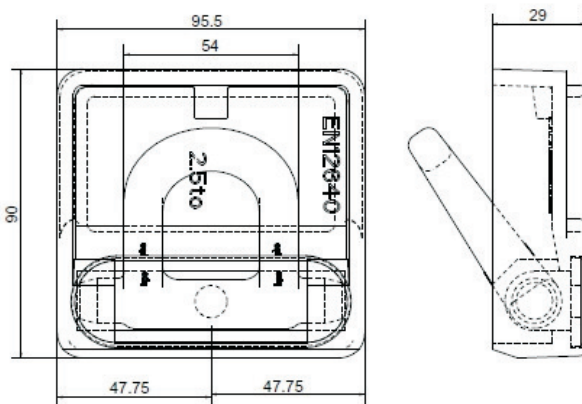
**Prod.#**

70.9031

**Uchwyt mocowania ładunku, wytrzymałość 8000 kg, surowy.**

Versenkter Zurring, Belastbarkeit 2500kg, ohne Beschichtung.  
Cargo-Lashing Ring, Loadability 2500kg, without coating.

**Homologacja nr NO-F28t0001-00, otrzymana przez TUV Niemcy.**  
Homologation Number No-F28t0001-00, Received From Tuv Sgs Germany.

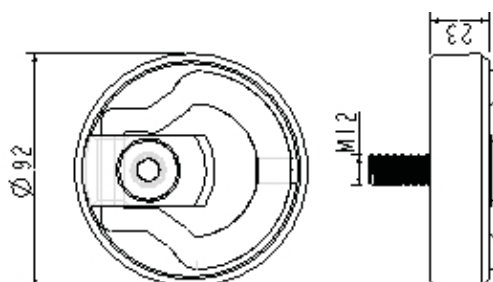


**Prod.#**

70.9022

**Uchwyt mocowania ładunku aluminiowy.**

Zurmulde, aluminium.  
Lashing Eye Box, Aluminium



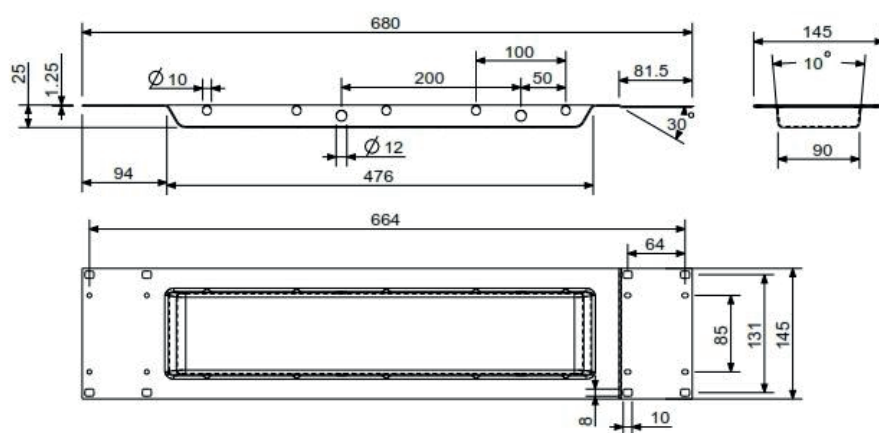
**Prod.#**

70.9036

## LISTWY MOCUJĄCE

### Listwa mocująca.

Bolt Lashing strip.

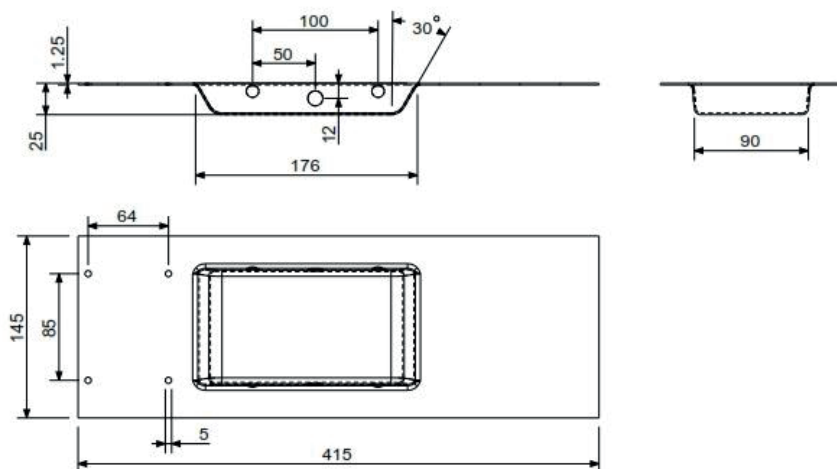


Prod.#

70.9028

### Listwa mocująca.

Bolt Lashing strip.



Prod.#

70.9029

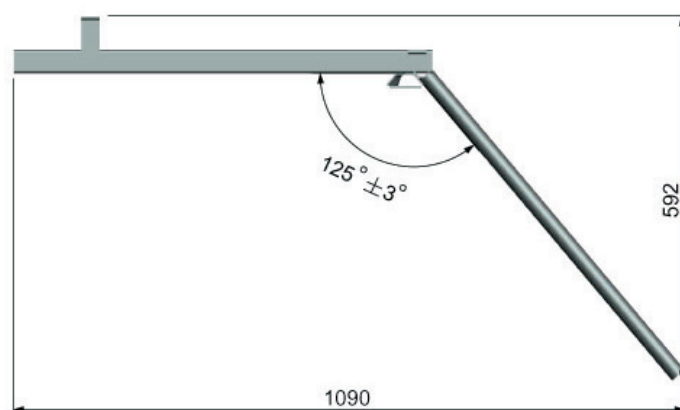
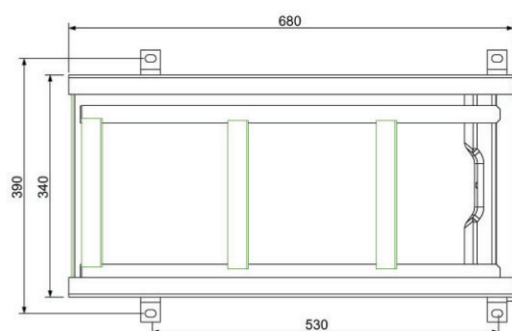
## DRABINKI WEJSCIOWE

### Aufstiegsleiter/ Ladder

#### Drabinka trzy-stopniowa, ocynk galwaniczny.

Leiter, 3-stufig, verzinkt.

Ladder, 3-stufig, verzinkt.



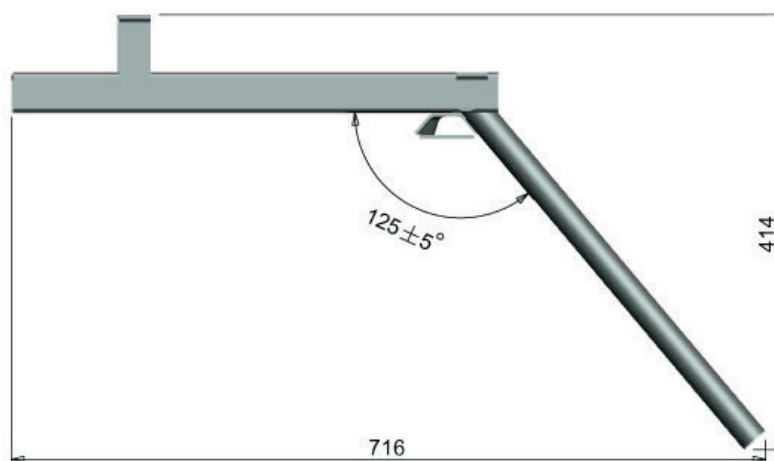
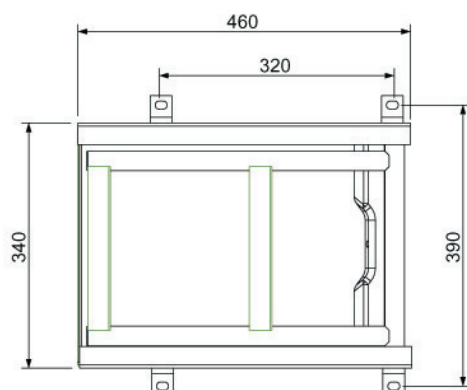
Prod.#

70.0001

#### Drabinka dwu-stopniowa, ocynk galwaniczny.

Leiter, 2-stufig, verzinkt.

Ladder, 2-stufig, verzinkt.



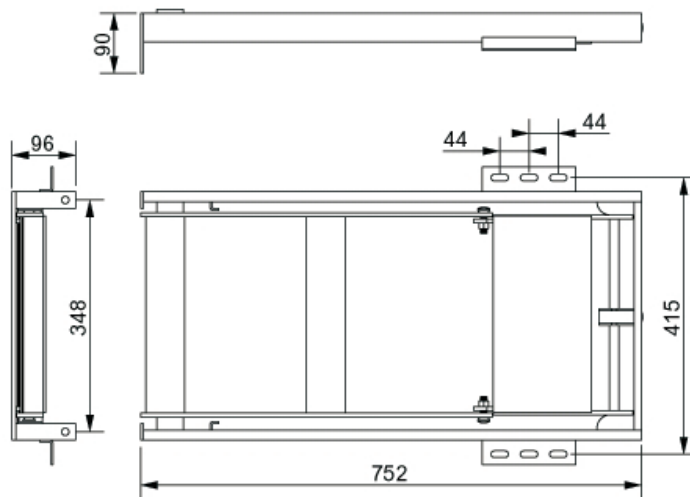
Prod.#

70.0002

**Drabinka dwu-stopniowa z podestem, ocynk galwaniczny.**

Leiter, 2-stufig, mit Plateau, verzinkt.

Ladder, 2-Steps, with plateau, hot dip zinc plated.

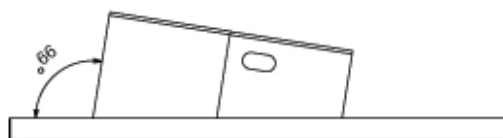
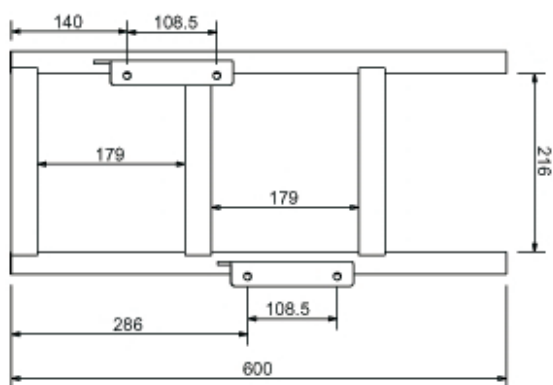
**Prod.#**

70.0015

**Drabinka trzy-stopniowa, ocynk galwaniczny.**

Leiter, 3-stufig, verzinkt.

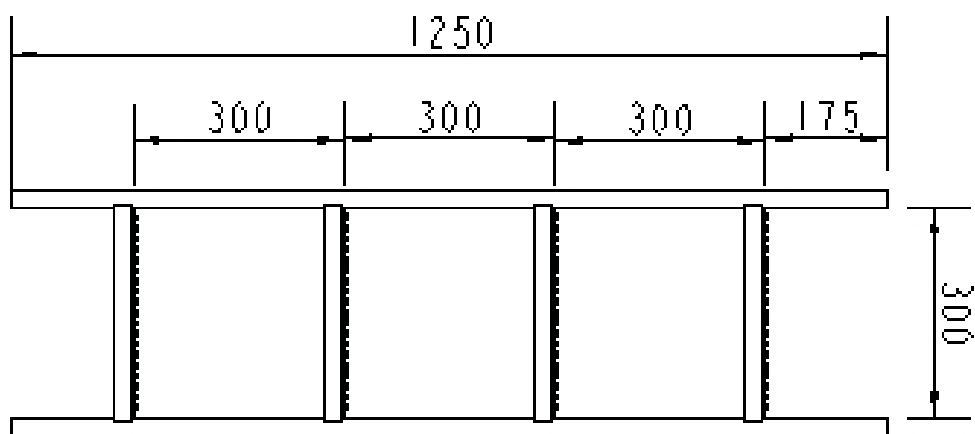
Ladder, 3-Steps, hot dip zinc plated.

**Prod.#**

70.0014

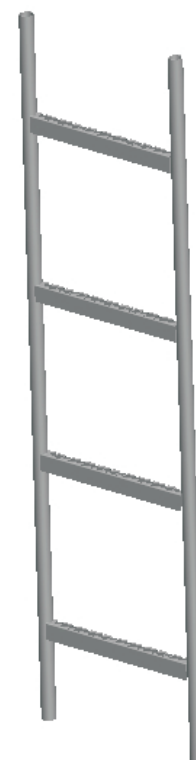
**Drabinka.**

Leiter.  
Ladder.



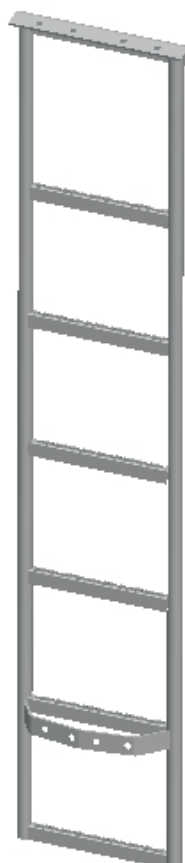
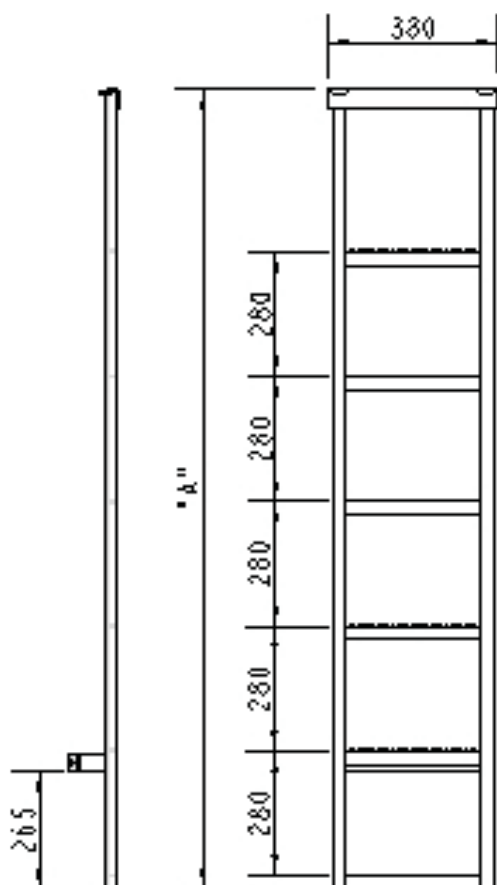
**Prod.#**

69.9997



**Drabinka.**

Leiter.  
Ladder.



**Prod.#**

**A**

69.9996 1800

69.9995 1700

69.9994 1600

69.9993 1500

69.9992 1400

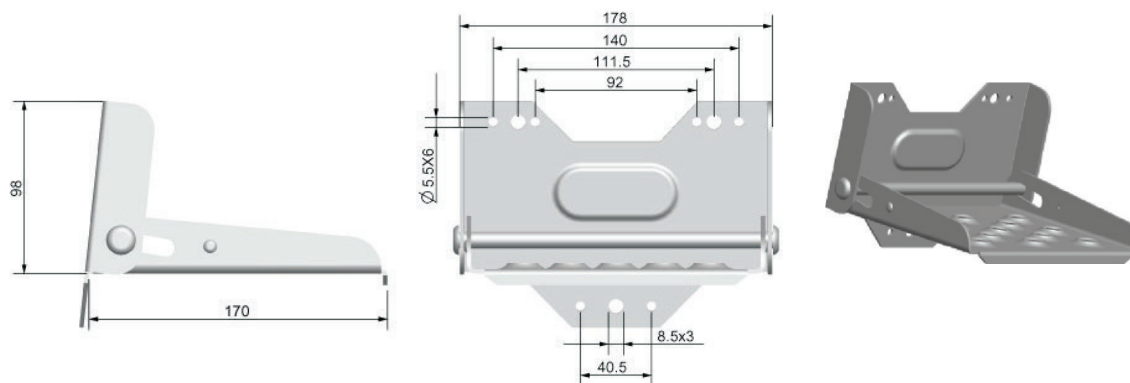
69.9991 1300

# STOPIEŃ NABURTOWY

## Aufstieg/ FootSteps

### Stopień naburtowy , składany, ocynkowany.

Klaptritt, galvanisch verzinkt.  
Foldable Foot Step, zinc plated.

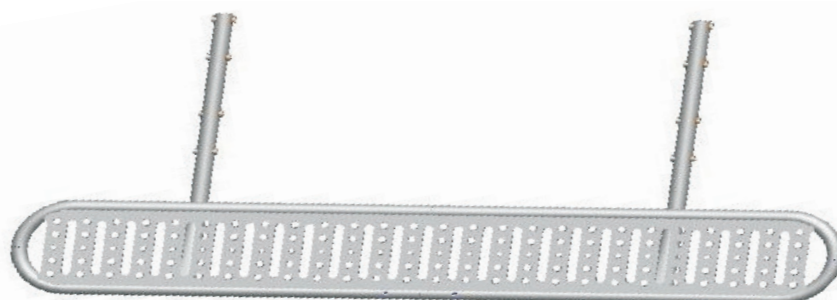
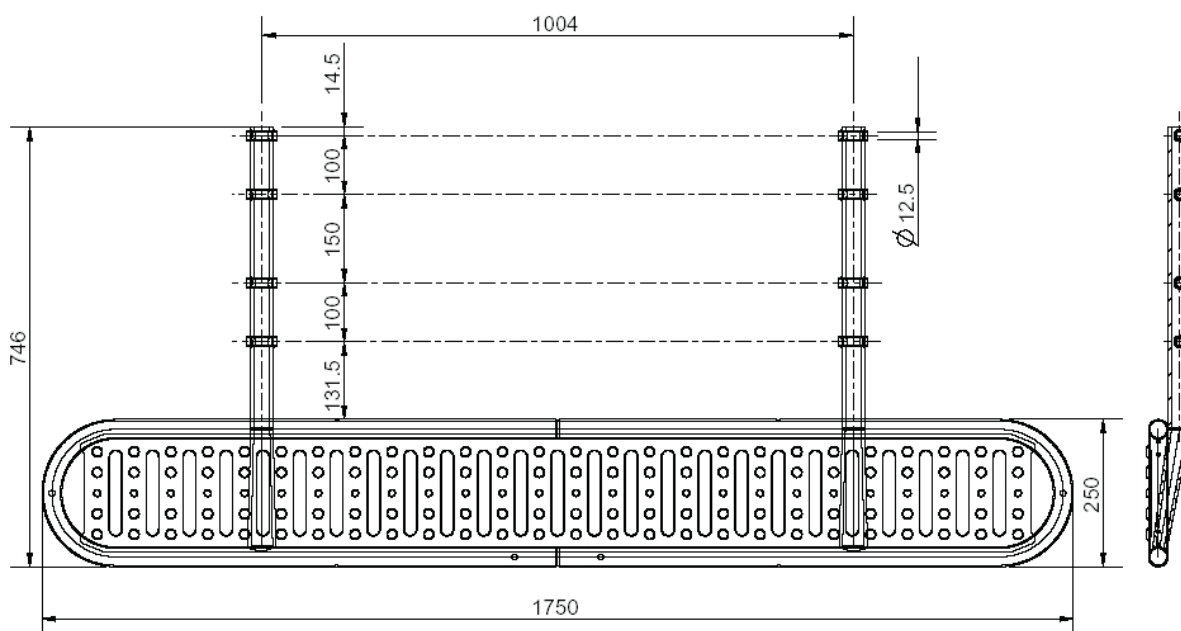


Prod.#

70.0013

### Podest wejściowy, ocynk ogniowy.

Aufstieg, feuerverzinkt.  
Foot Step, hot dip zinc plated.



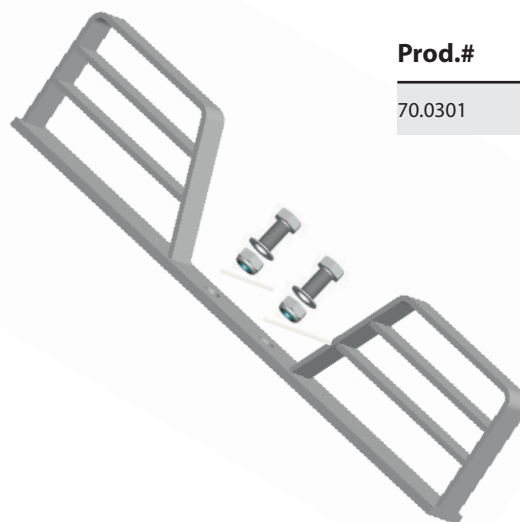
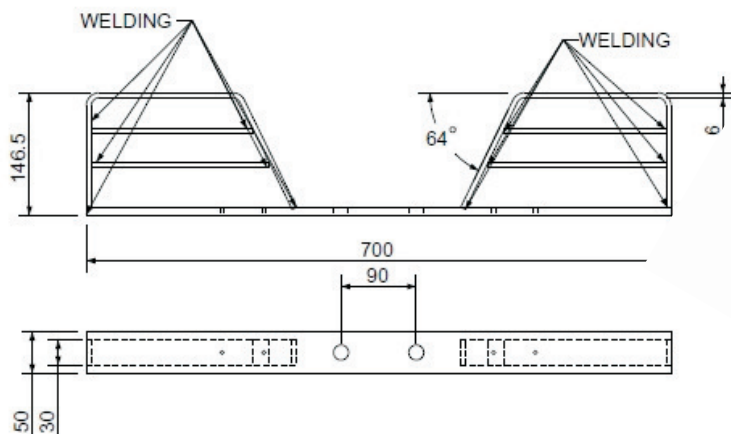
Prod.#

70.0015V



**Podwójny stopień wejściowy, przykręcany, ocynkowany.**

Aufstieg doppelt, galvanisch verzinkt.  
 Double footstep zinc plated screwable.

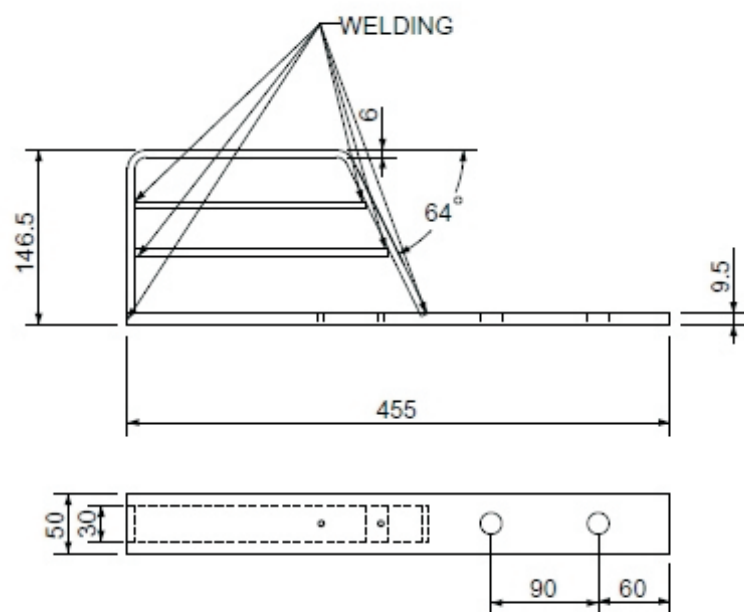


**Prod.#**

70.0301

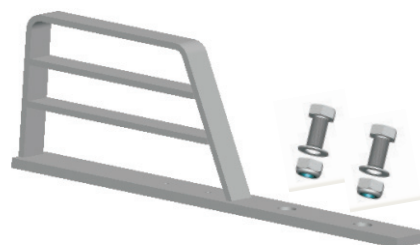
**Pojedynczy stopień wejściowy, przykręcany, ocynkowany.**

Aufstieg einfach, galvanisch verzinkt.  
 Single footstep zinc plated screwable.



**Prod.#**

70.0302



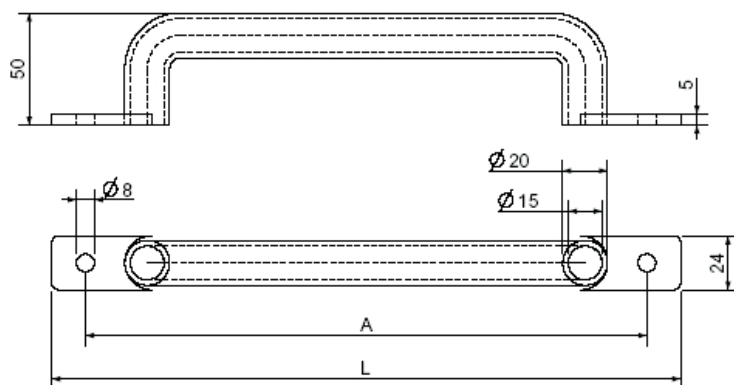
## RĄCZKI

### Handgriff/Handle Grip

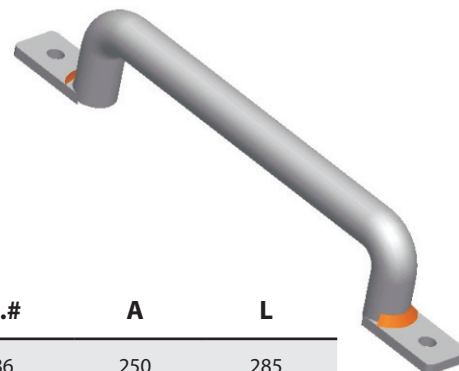
#### Rączka stalowa, stal SS316.

Handgriff in ss316.

Handle grip in ss316.



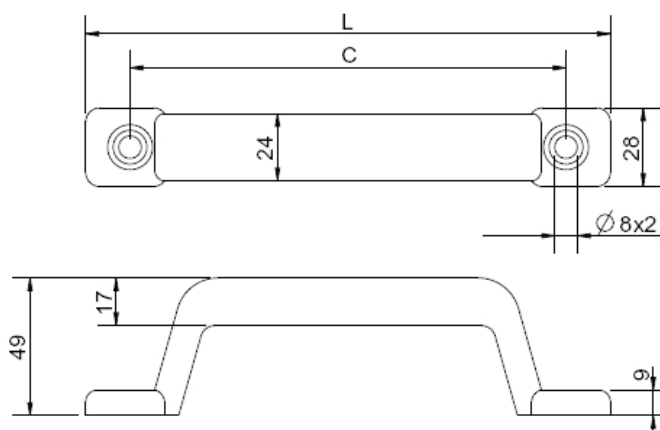
Prod.#	A	L
54.9086	250	285
54.9087	155	185



#### Rączka gumowa.

Gummi-Handgriff, mit V erschlusskappe.

Rubber Handle Grip, with cap.



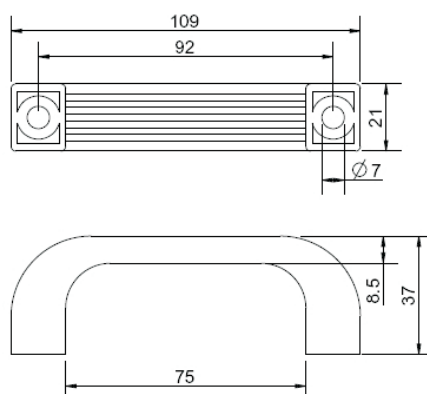
Prod.#	L	C
30.0000	186	155
30.0001	280	250



#### Rączka gumowa.

Gummi-Handgriff, mit V erschlusskappe.

Rubber Handle Grip, with cap.



Prod.#
30.0002



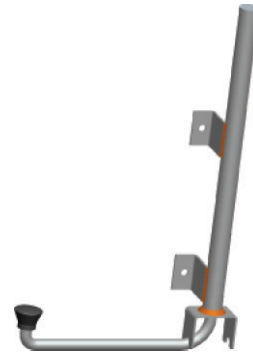
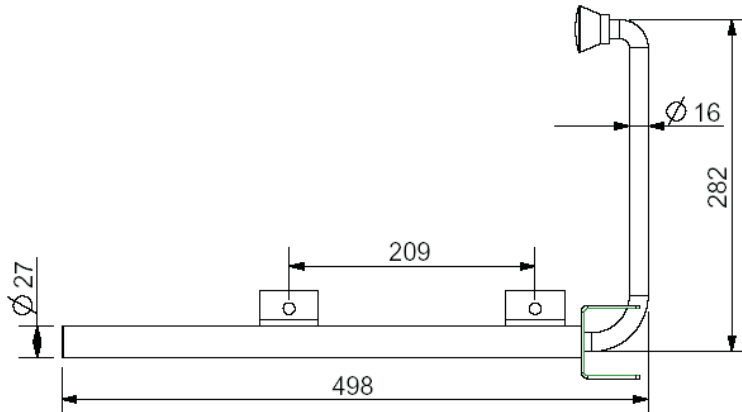
# TRZYMACZE DRZWI

## Tuerhalter/ Doorholder

### Trzymacz drzwi z gumową końcówką, ocynk ogniowy.

Tuerhalter, mit Gummianschlag, verzinkt.

Door-Holder, with rubber stopper, hot dip zinc plated.



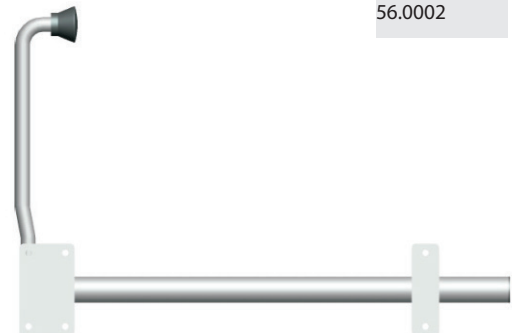
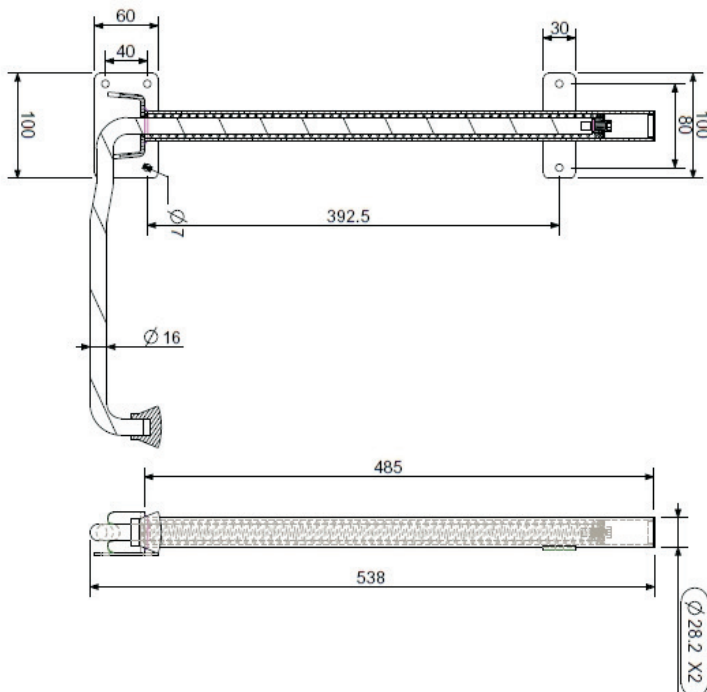
Prod.#

56.0000

### Trzymacz drzwi z gumową końcówką, ocynk ogniowy.

Tuerhalter, mit Gummianschlag, verzinkt.

Door-Holder, with rubber stopper, hot dip zinc plated.



Prod.#

56.0002

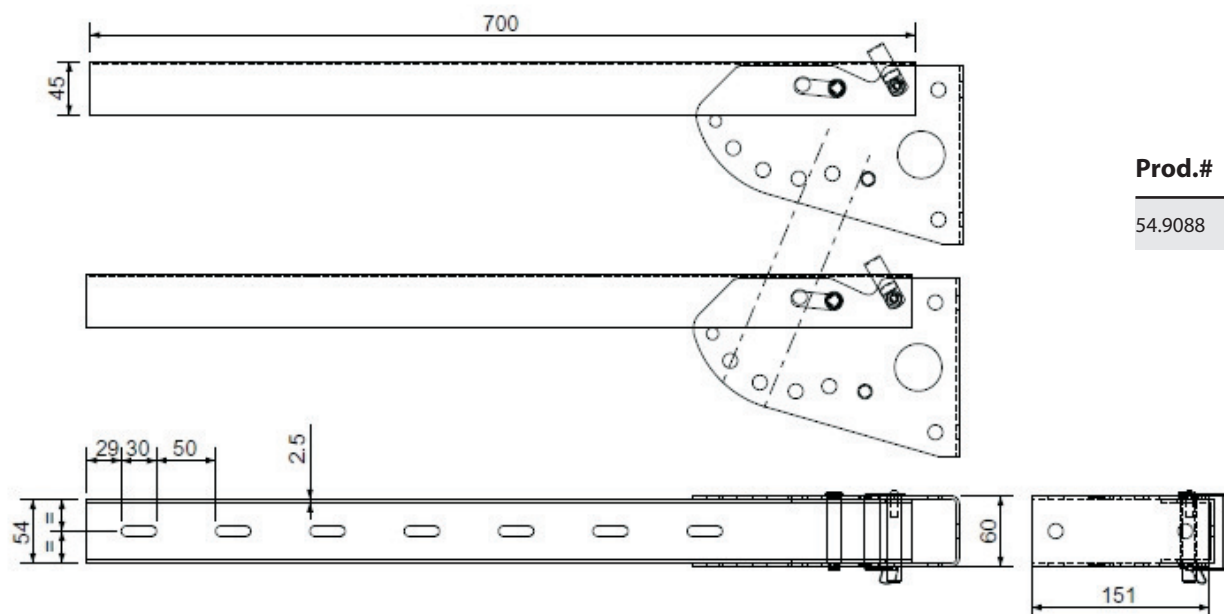
## WSPORNIKI OSŁON PRZECIWROWEROWYCH

Halter fuer Seitenschutz/ Holder For Side Protection

**Wspornik listew antyrowerowych, składany, ocynkowany.**

Halter fuer seitenschutz, klappbar, galvanisch verzinkt.

Holder for side protection, turnable, zinc plated.



**Prod.#**

54.9088

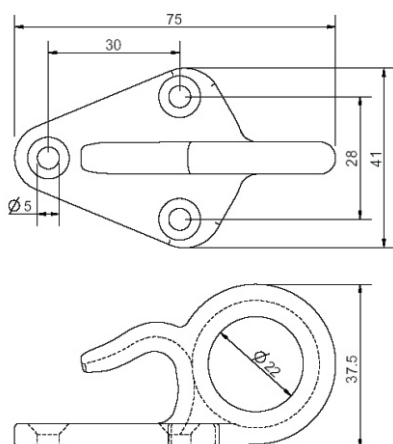
## HACZYKI PLANDEKI

Verbinder/ Connector

**Haczyk do plandeki z oczkiem, ocynkowany.**

Planenhaken mit Oese, verzinkt.

Tarpolin-Hook with Loop, hot dip zinc plated.



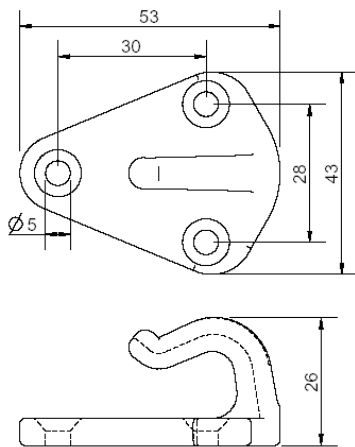
**Prod.#**

57.0004

**Haczyk do plandeki, ocynkowany ogniowo.**

Planenhaken, verzinkt.

Tarpolin-Hook, hot dip zinc plated.



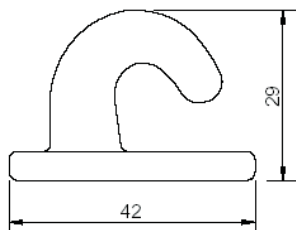
**Prod.#**

57.0005

**Haczyk do plandeki, ocynkowany ogniowo.**

Planenhaken, verzinkt.

Tarpolin-Hook, hot dip zinc plated.



**Prod.#**

57.0002

**KONSOLE MOCOWANIA RAM**

Verbindungskonsolen/ Chassis Connector

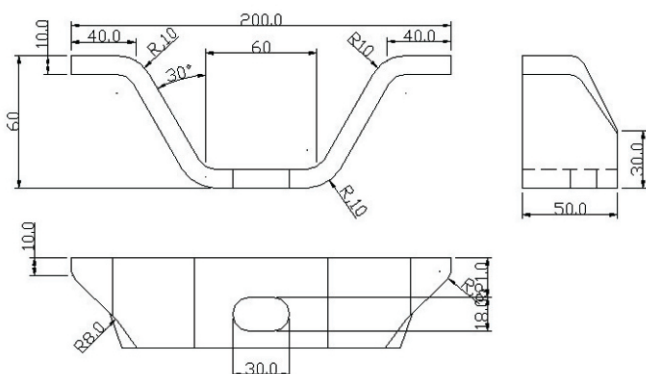
**Konsola mocowania ramy, surowa**

Verbindungskonsole, unbeschichtet.

Chassis-Connector, uncoated.

**Minimalna ilość zamówienia: 1000 sztuk.**

Minimum Order Qty -1000Pcs.



**Prod.#**

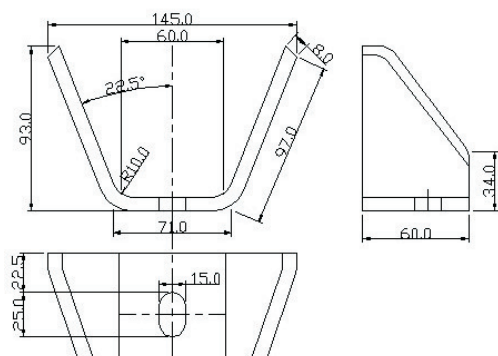
54.6021

**Konsola mocowania ramy , surowa**

Verbindungskonsole, unbeschichtet.  
Chassis-Connector, uncoated.

**Minimalna ilość zamówienia: 1000 sztuk.**

Minimum Order Qty-1000Pcs.

**Prod.#**

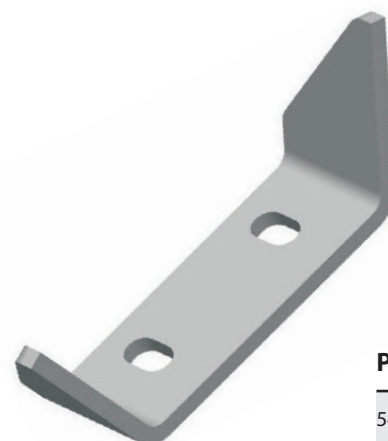
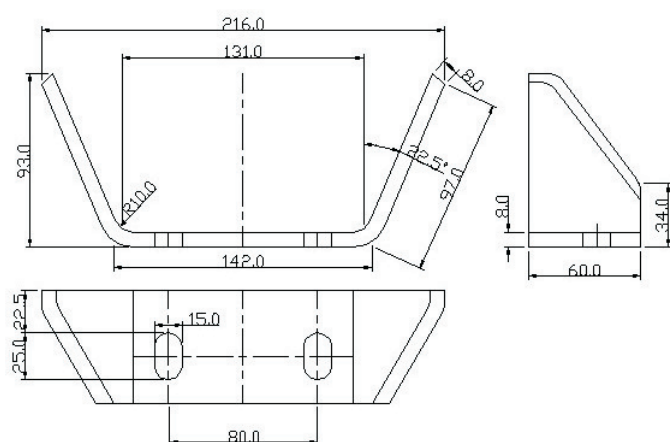
54.6022

**Konsola mocowania ramy , surowa**

Verbindungskonsole, unbeschichtet.  
Chassis-Connector, uncoated.

**Minimalna ilość zamówienia: 1000 sztuk.**

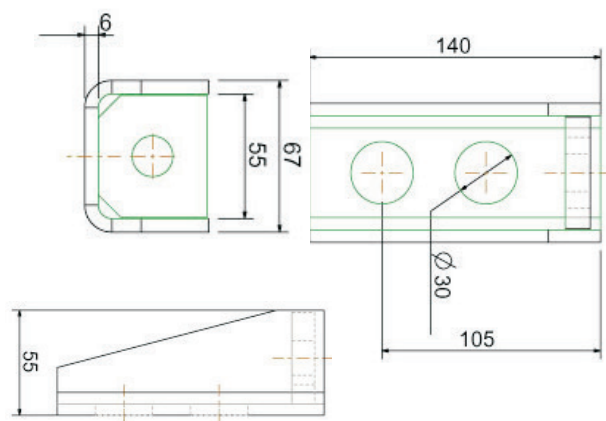
Minimum Order Qty-1000Pcs.

**Prod.#**

54.6023

**Konsola mocowania ramy , surowa**

Verbindungskonsole, unbeschichtet.  
Chassis-Connector, uncoated.

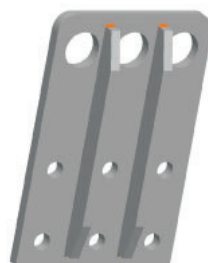
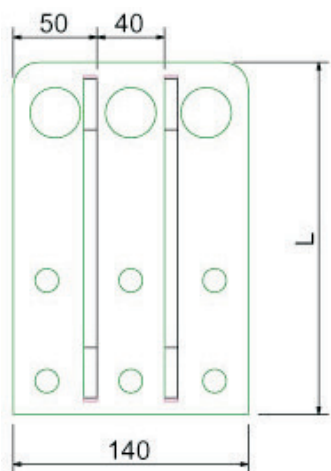
**Prod.#**

54.6026

**Konsola mocowania ramy , surowa**

Verbindungskonsole, unbeschichtet.

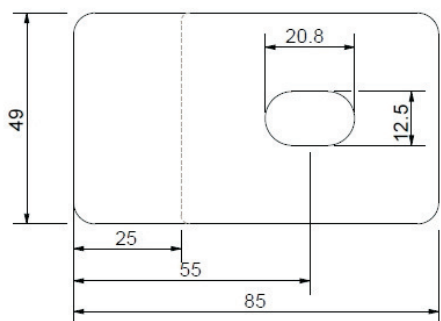
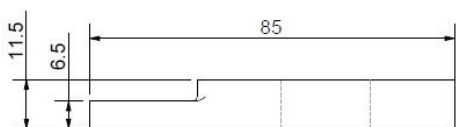
Chassis-Connector, uncoated.



Prod.#	L
54.6024	210
54.6025	240

**Łapka dociskowa**

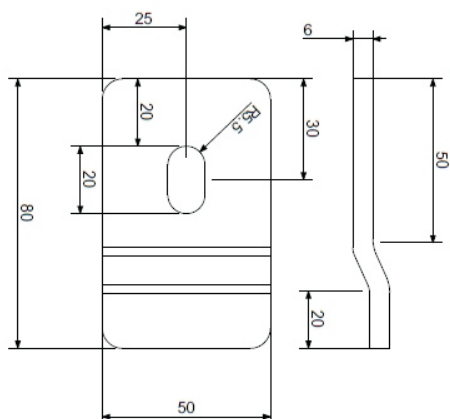
Woodloft Clamp.



Prod.#
57.0003

**Łapka dociskowa**

Woodloft Clamp.

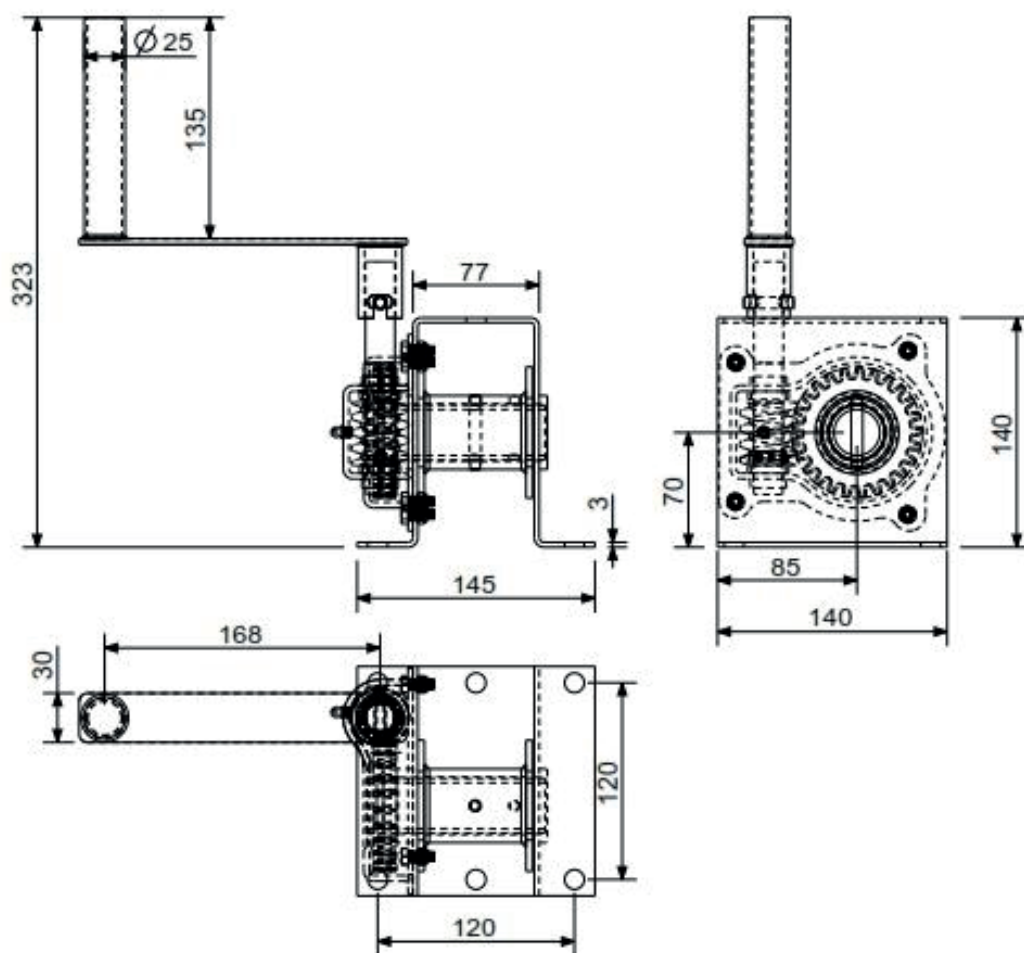


Prod.#
54.5006

# WINDY I UCHWYTY KÓŁ ZAPASOWYCH

## Winda koła zapasowego

SpareWheelWinch



Prod.#

73.0000

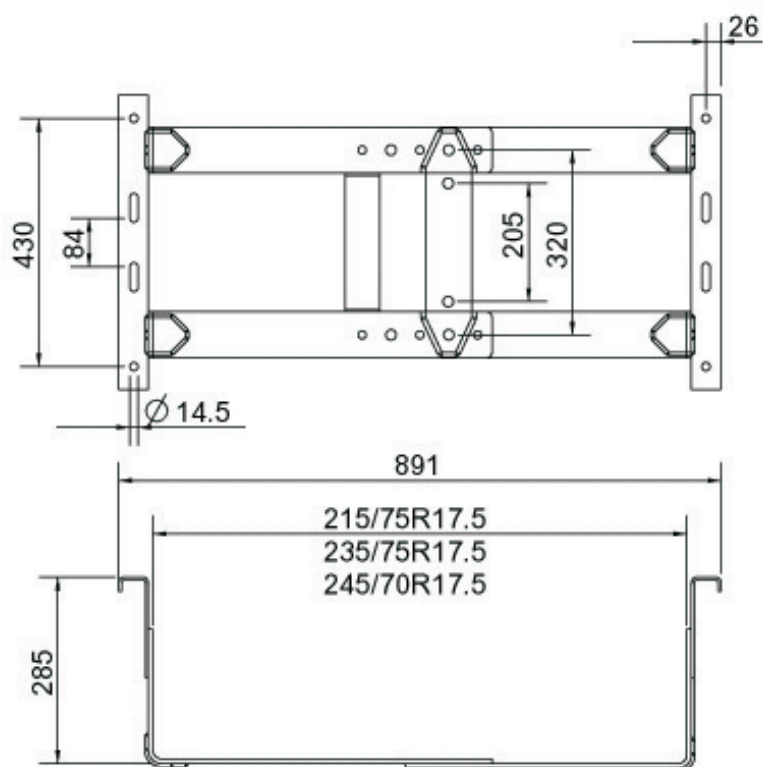
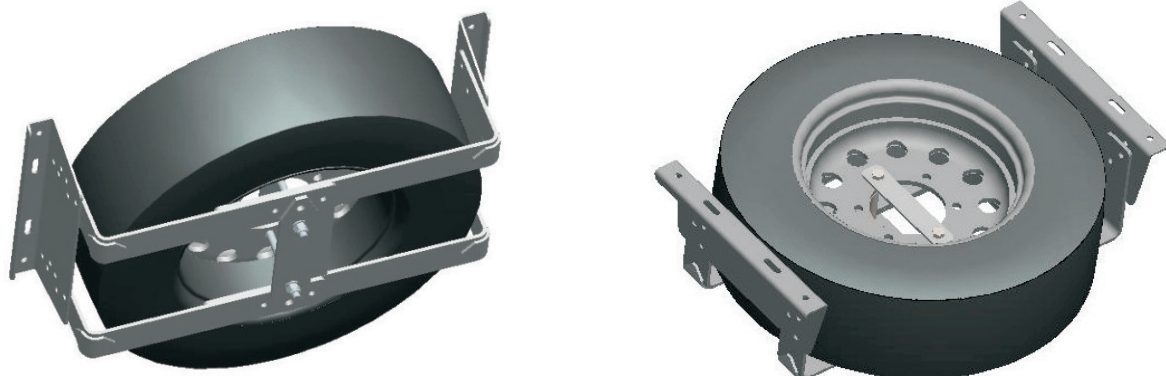




**Uchwyt koła zapasowego do kół o rozmiarze 15,5 – 19,5, ocynkowany ogniowo.**

Ersatzradhalter, feuerverzinkt Tire size / Radgröße 17.5-19.5.

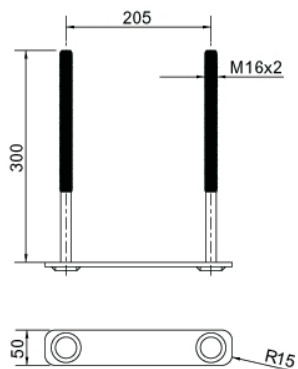
Spare Wheel Holder, hot dip zinc plated.

**Prod.#**

56.1000

**Mocowanie do kół bliźniaczych**

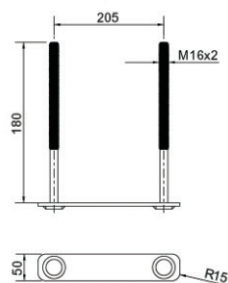
Zwillingsbereifung.  
Dual tires.

**Prod.#**

56.1001

**Mocowanie do kół pojedynczych.**

Einfachbereifung.  
Single tires.

**Prod.#**

56.1002

**Komplet montażowy**

Montage Hit.  
Assembly Kit.

**12 śrób**

12 screw

**12 podkładek**

12 nut

**12 nakrętek**

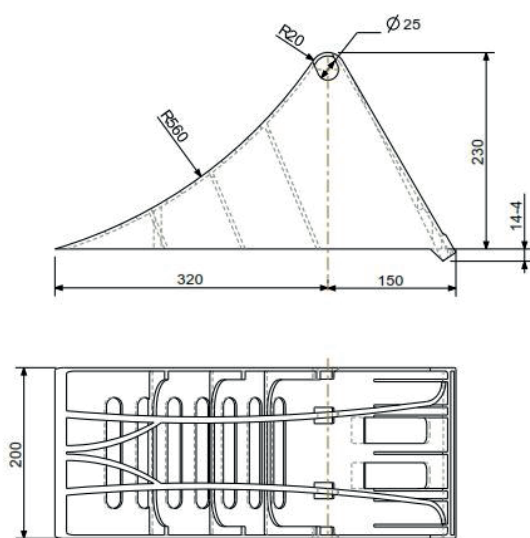
12 washer

**Prod.#**

56.1004

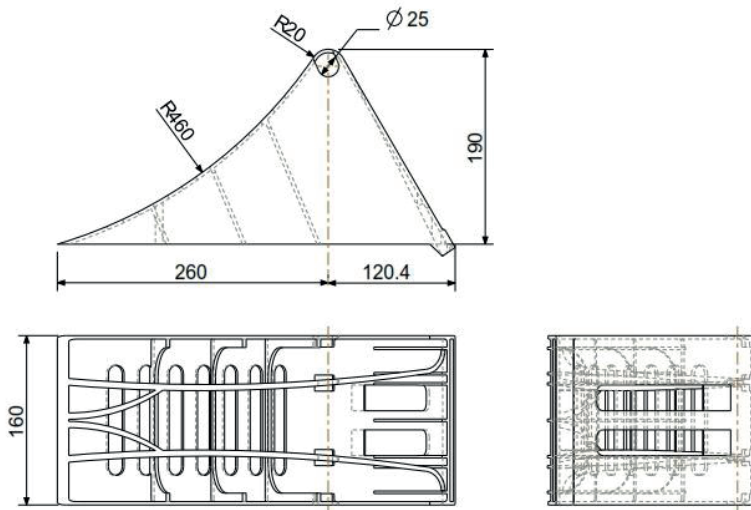
**KLINY POD KOŁA****Klin pod koło plastikowy duży.**

Plastic Wheel Chock Big.

**Prod.#**

29.1054

**Klin pod koło plastikowy mały.**  
Plastic Wheel Chock Small.

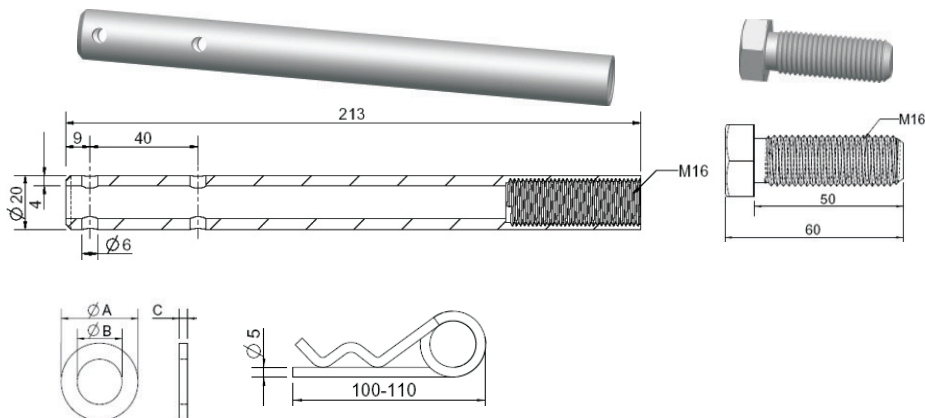


**Prod.#**

29.1055

**Zestaw montażowy do klina plastikowego.**

U-Keilhalter Rohr, Set, galvanisch verzinkt.  
Wheel Chock Holder Pipe, Kit, zinc plated.



**Prod.#**

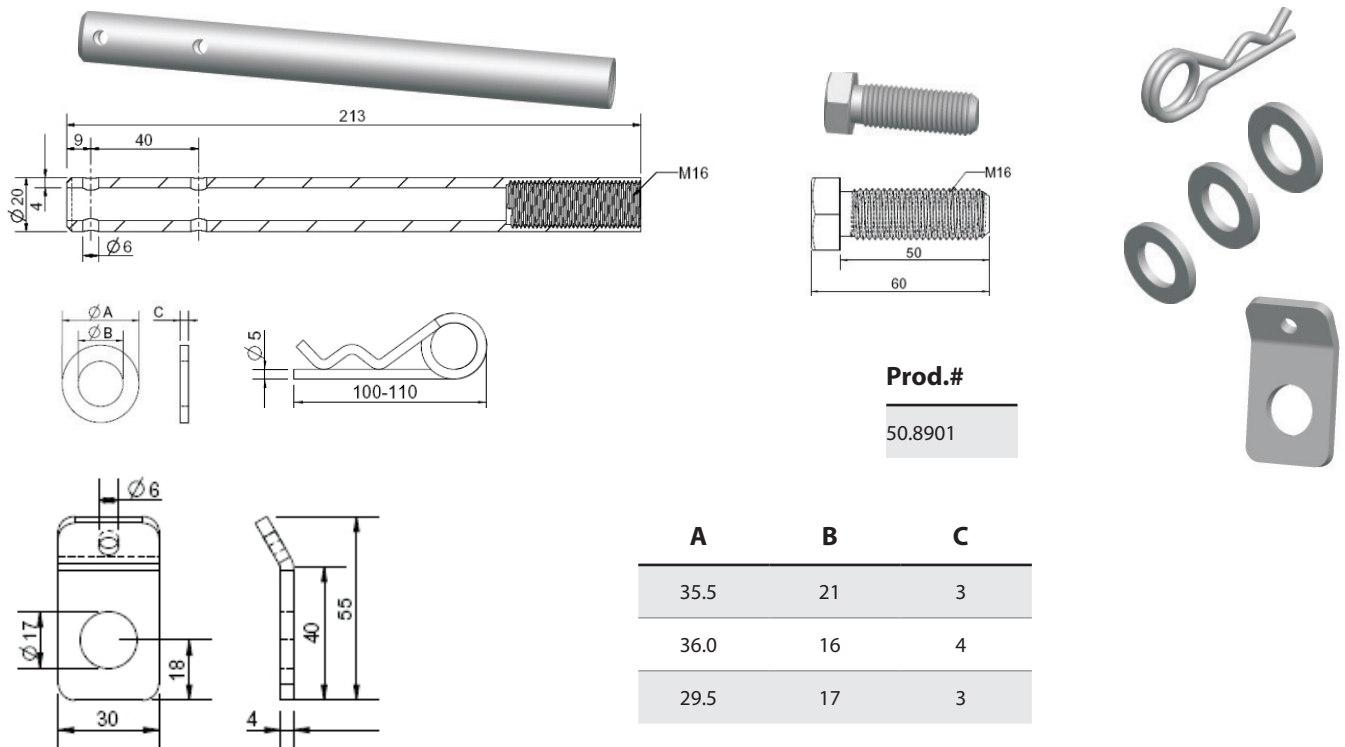
50.8900

A	B	C
35.5	21	3
36.0	16	4
29.5	17	3

**Zestaw montażowy do klina plastikowego .**

U-Keilhalter Rohr, Set, galvanisch verzinkt.

Wheel Chock Holder Pipe, Kit, zinc plated.



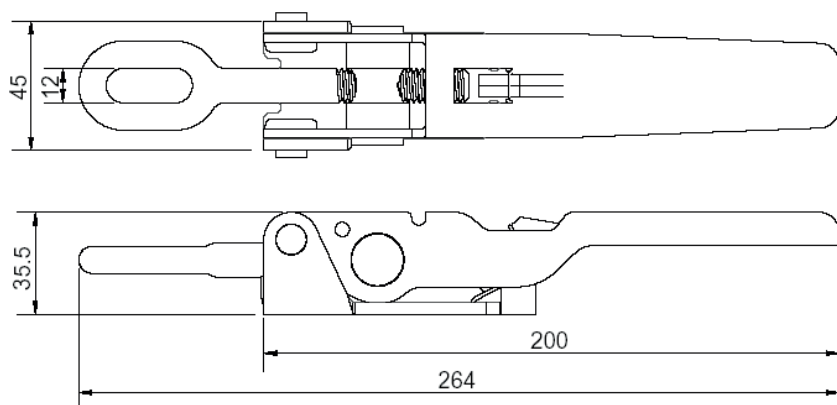
## ZAMKNIĘCIA BURTOWE

### Verschluss / Latches

#### Zamknięcie burtowe, ocynkowane.

Exzenterverschluss, galvanisch verzinkt.

Latch, zinc plated.



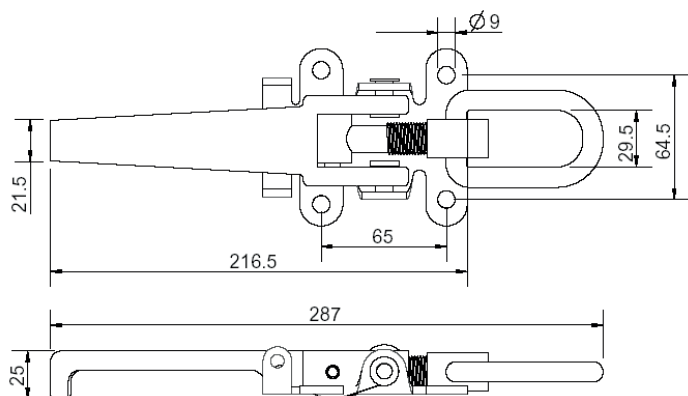
**Prod.#**

77.0032

#### Zamknięcie burtowe, ocynkowane.

Exzenterverschluss, galvanisch verzinkt.

Latch, zinc plated.



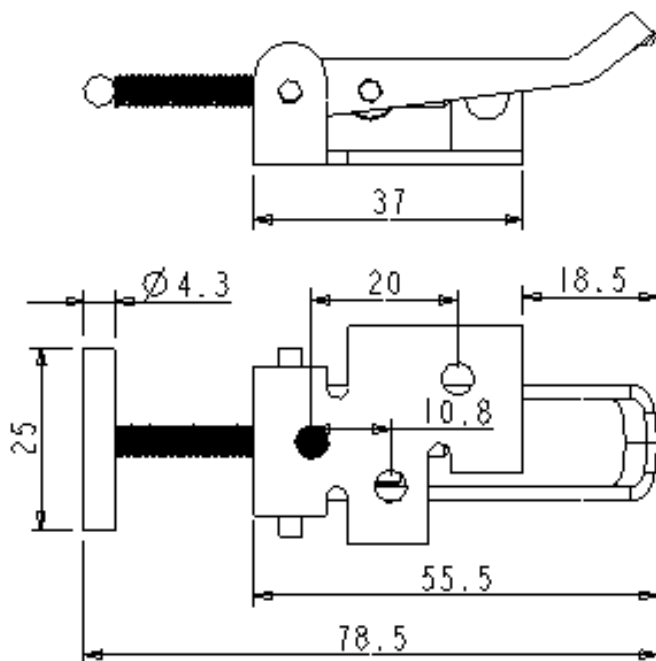
**Prod.#**

77.0030

**Zamknięcie burtowe, ocynkowane, polakierowane proszkowo.**

Exzenterverschluss, schwarze pulverbeschichtet.

Latch, black powder coated.

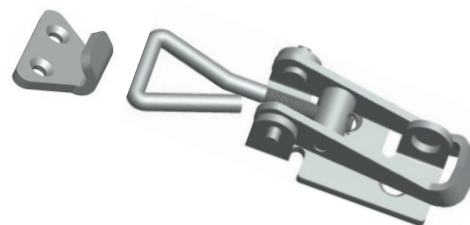
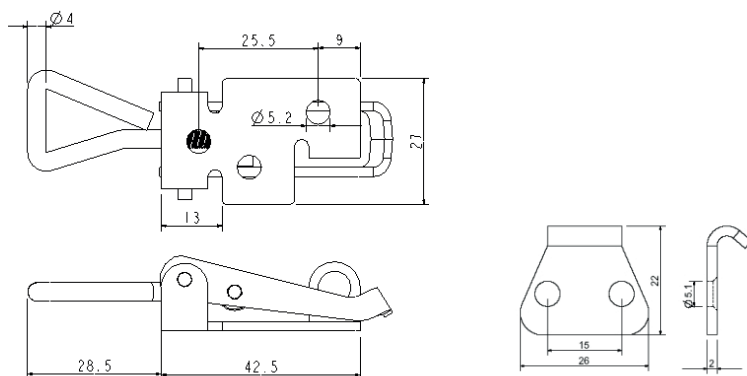
**Prod.#**

77.0031

**Zamknięcie burtowe, ocynkowane.**

Exzenterverschluss, galvanisch verzinkt.

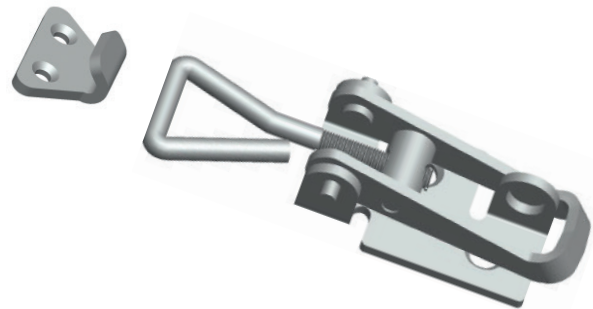
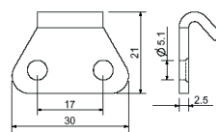
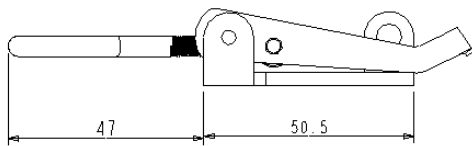
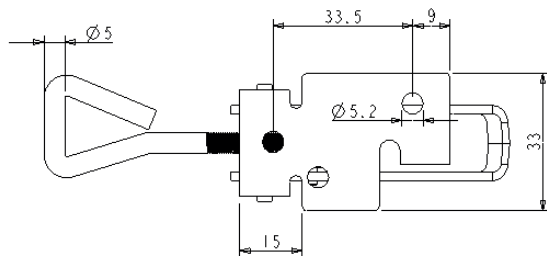
Latch, zinc plated.

**Prod.#**

77.0033

**Zamknięcie burtowe, ocynkowane.**

Exzenterverschluss, galvanisch verzinkt.  
Latch, zinc plated.

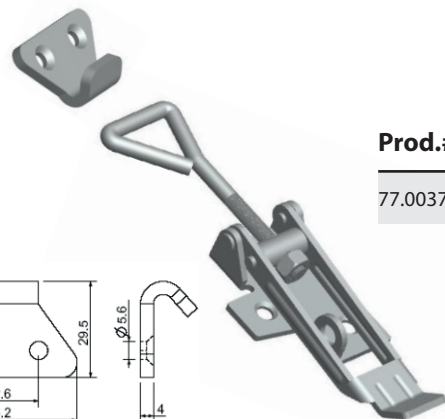
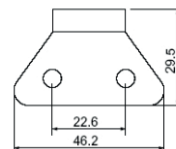
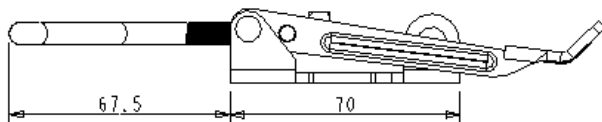
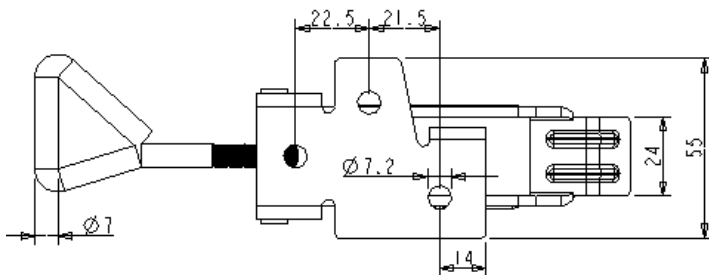


**Prod.#**

77.0034

**Zamknięcie burtowe, ocynkowane.**

Exzenterverschluss, galvanisch verzinkt.  
Latch, zinc plated.

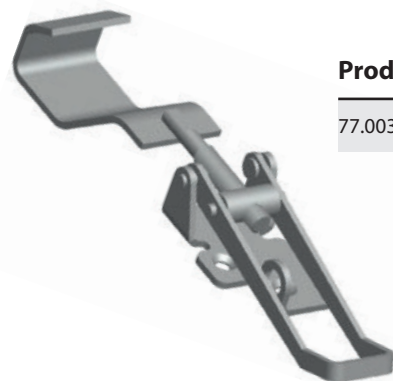
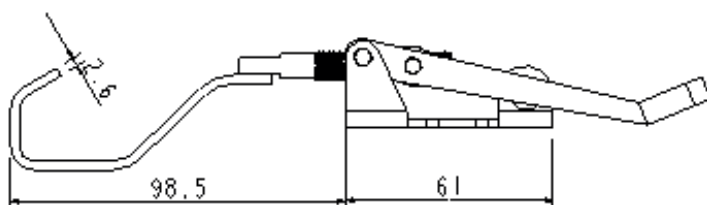
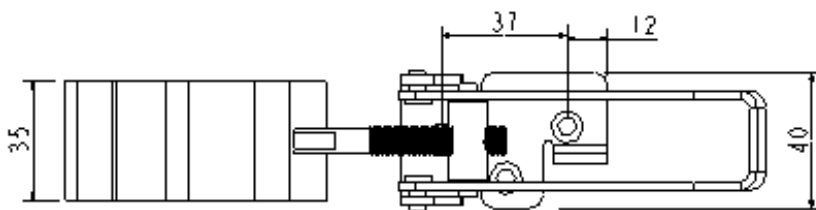


**Prod.#**

77.0037

**Zamknięcie burtowe, ocynkowane.**

Exzenterverschluss, galvanisch verzinkt.  
Latch, zinc plated.

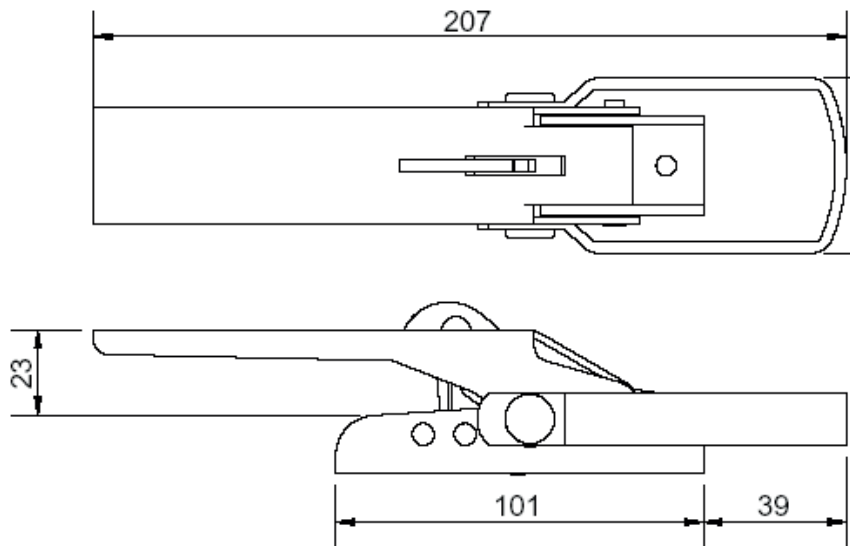


**Prod.#**

77.0036

**Zamknięcie burtowe, ocynkowane.**

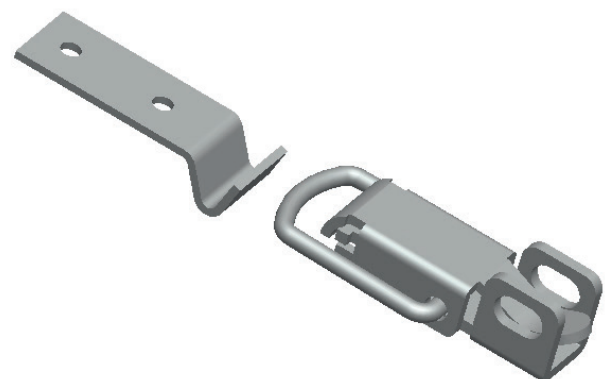
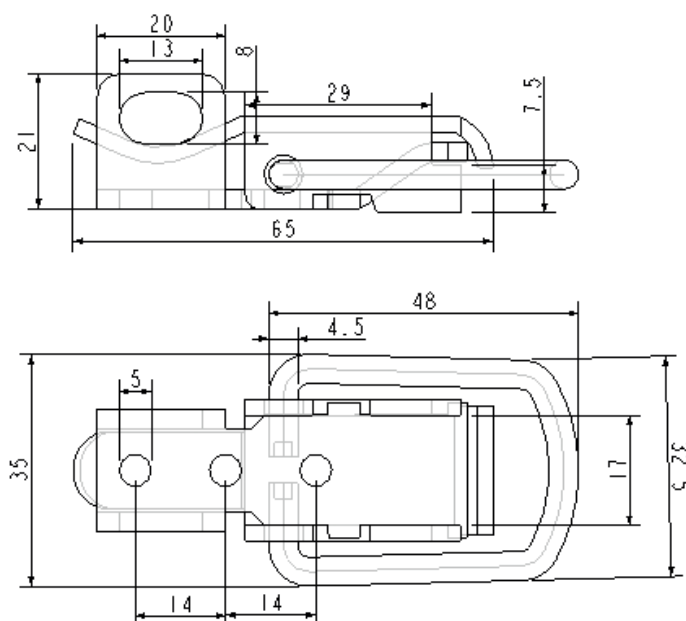
Exzenterverschluss, galvanisch verzinkt.  
Latch, zinc plated.

**Prod.#**

77.0075

**Zamknięcie burtowe, ocynkowane.**

Exzenterverschluss, galvanisch verzinkt.  
Latch, zinc plated.

**Prod.#**

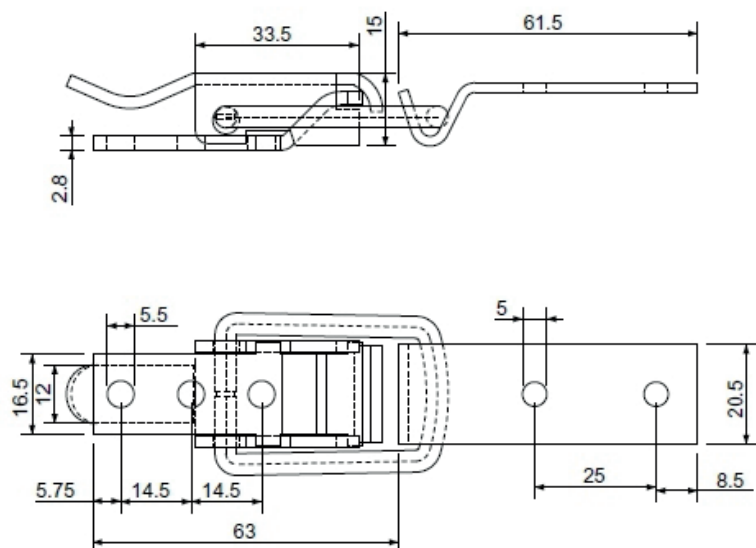
77.0076



**Zamknięcie burtowe, ocynkowane.**

Exzenterverschluss, galvanisch verzinkt.

Latch, zinc plated.



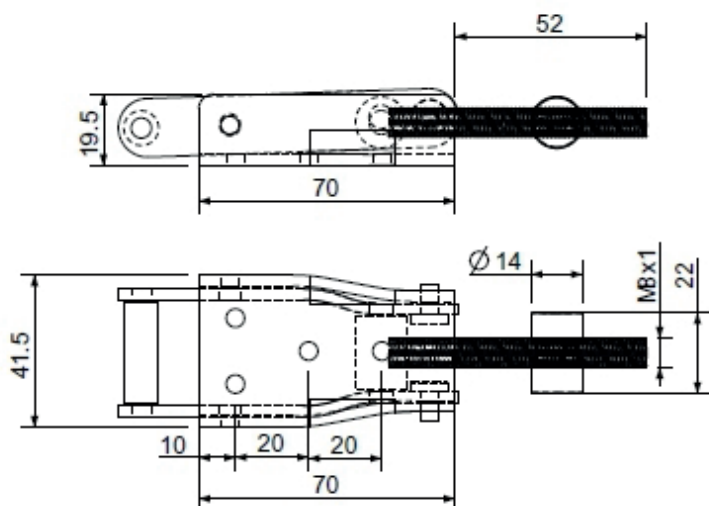
**Prod.#**

77.0077

**Zamknięcie burtowe, ocynkowane.**

Exzenterverschluss, galvanisch verzinkt.

Latch, zinc plated.

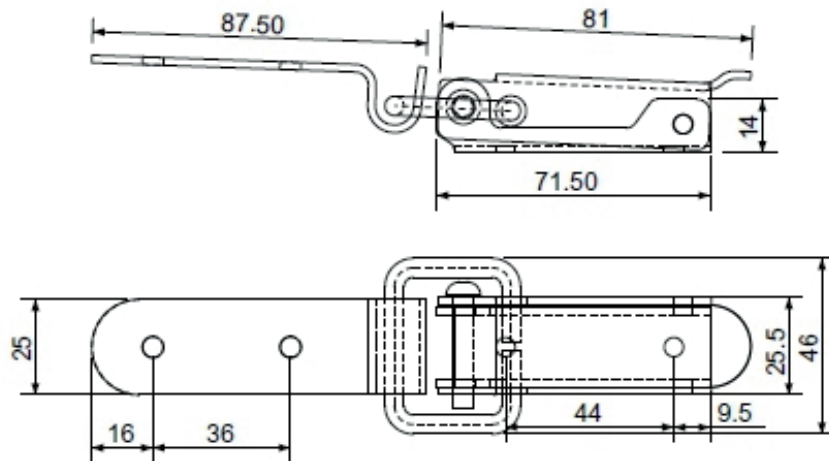


**Prod.#**

77.0078

**Zamknięcie burtowe, ocynkowane.**

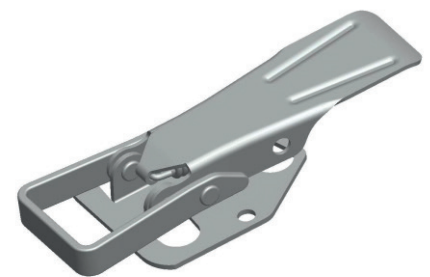
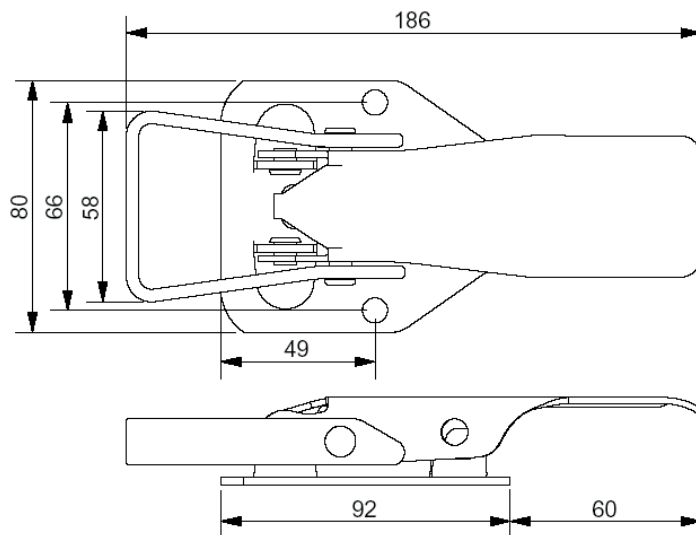
Exzenterverschluss, galvanisch verzinkt.  
Latch, zinc plated.

**Prod.#**

77.0079

**Zamknięcie burtowe, ocynkowane.**

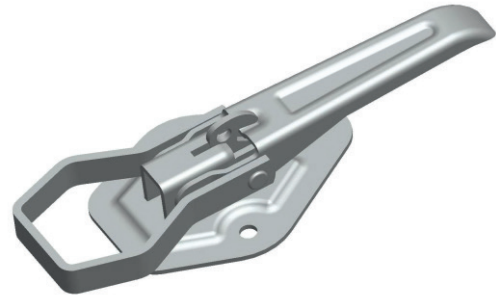
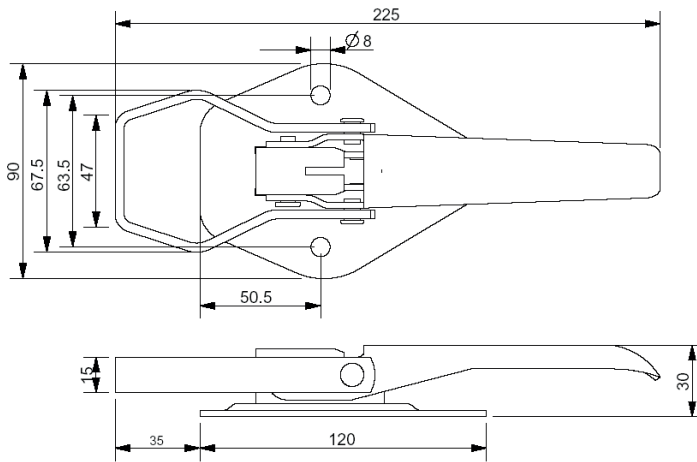
Exzenterverschluss, galvanisch verzinkt.  
Latch, zinc plated.

**Prod.#**

77.0045

**Zamknięcie burtowe, ocynkowane.**

Exzenterverschluss, abschliessbar, galvanisch verzinkt.  
Latch, zinc plated, lockable.

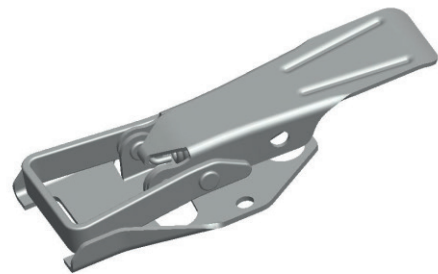
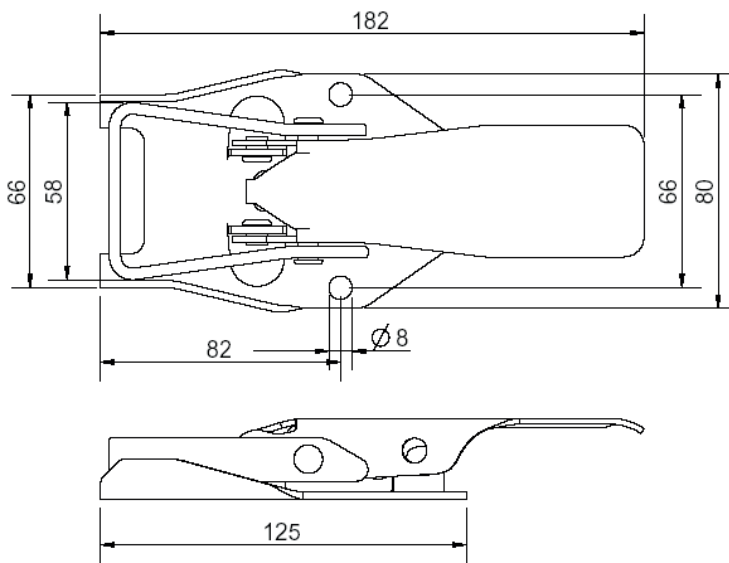


**Prod.#**

77.0046

**Zamknięcie burtowe, ocynkowane.**

Exzenterverschluss, galvanisch verzinkt.  
Latch, zinc plated.

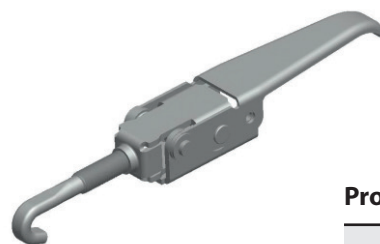
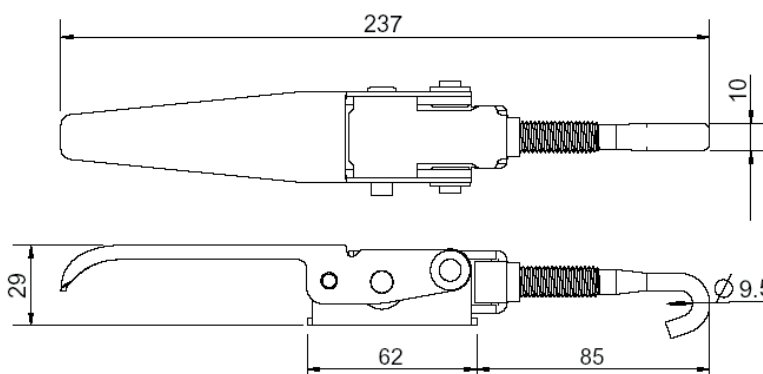


**Prod.#**

77.0051

**Zamknięcie burtowe, ocynkowane.**

Exzenterverschluss, galvanisch verzinkt.  
Latch, zinc plated.



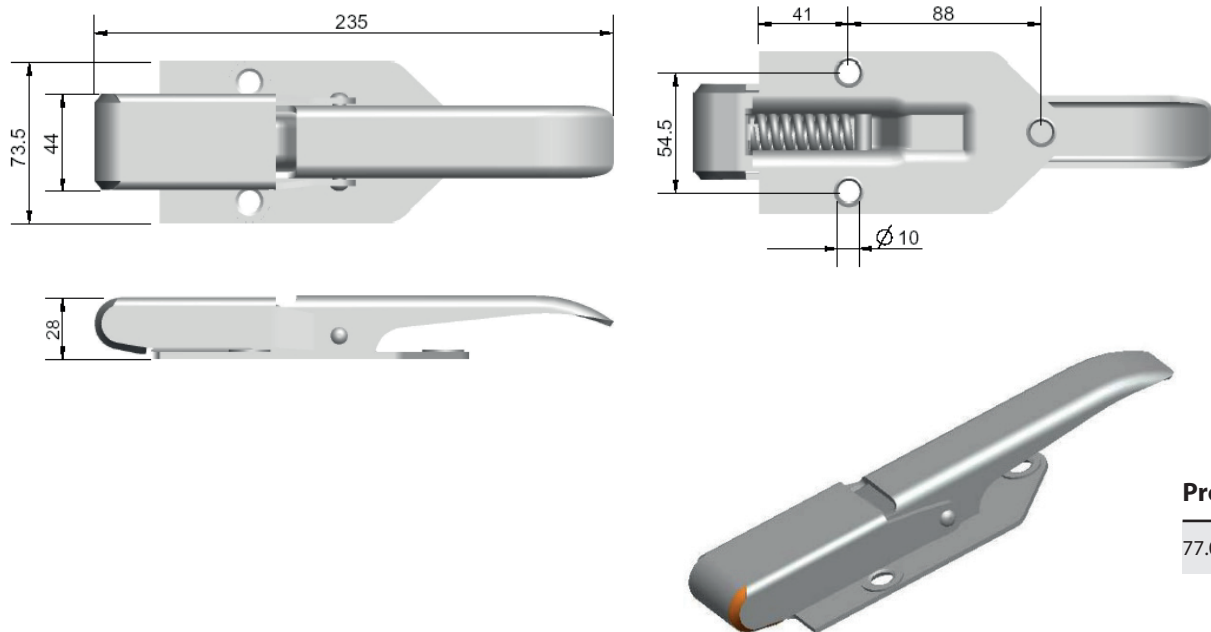
**Prod.#**

77.0053

**Zamknięcie burtowe, ocynkowane.**

Exzenterverschluss, galvanisch verzinkt.

Latch, zinc plated.

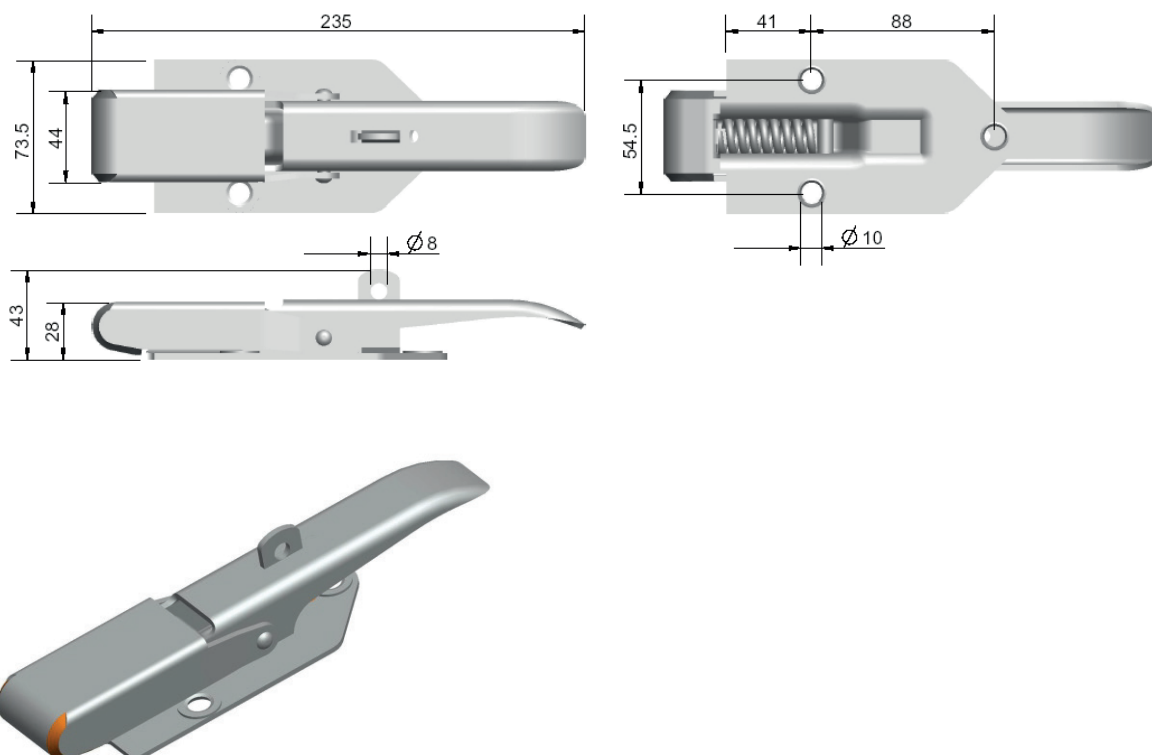
**Prod.#**

77.0047

**Zamknięcie burtowe, ocynkowane.**

Exzenterverschluss, galvanisch verzinkt.

Latch, zinc plated.

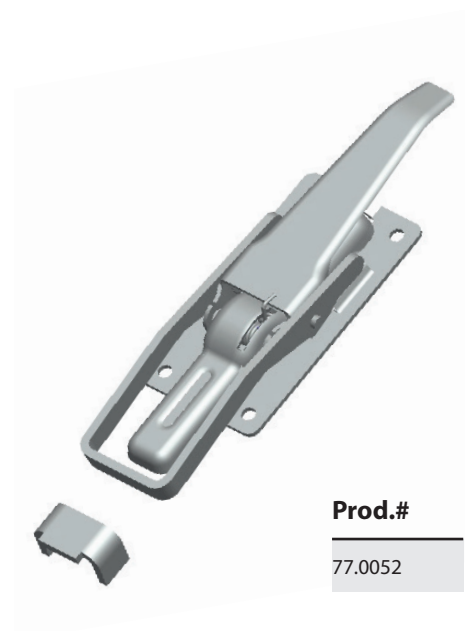
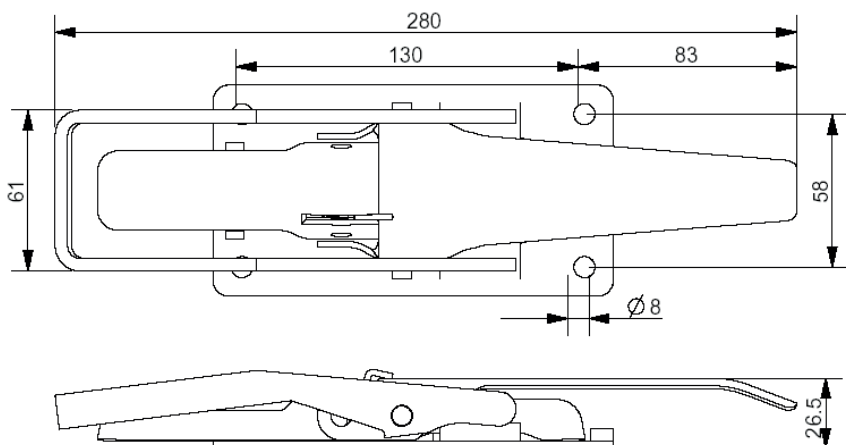
**Prod.#**

77.0048

**Zamknięcie burtowe, ocynkowane.**

Pendelverschluss, galvanisch verzinkt.

Pannel Latch, zinc plated.



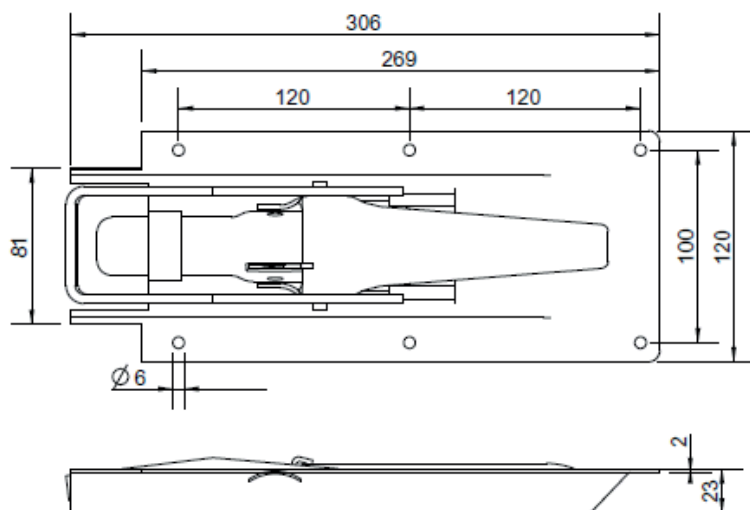
**Prod.#**

77.0052

**Zamknięcie burtowe, ocynkowane.**

Pendelverschluss, galvanisch verzinkt.

Pannel Latch, zinc plated.



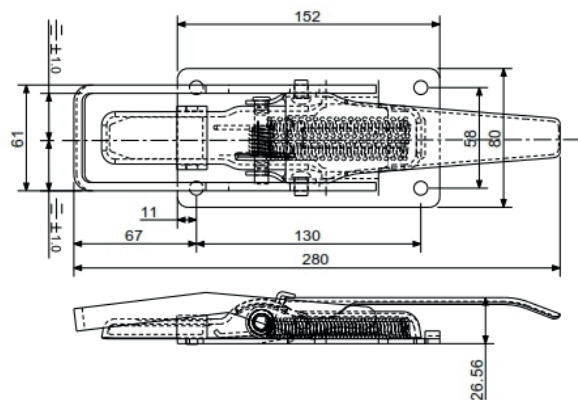
**Prod.#**

77.0055

**Zamknięcie burtowe, ocynkowane.**

Pendelverschluss, galvanisch verzinkt.

Pannel Latch, zinc plated.

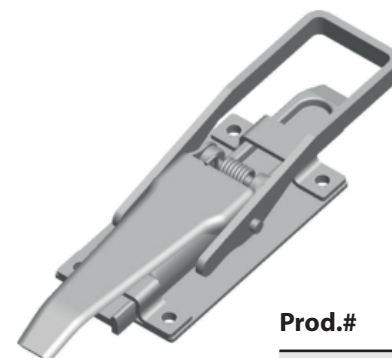
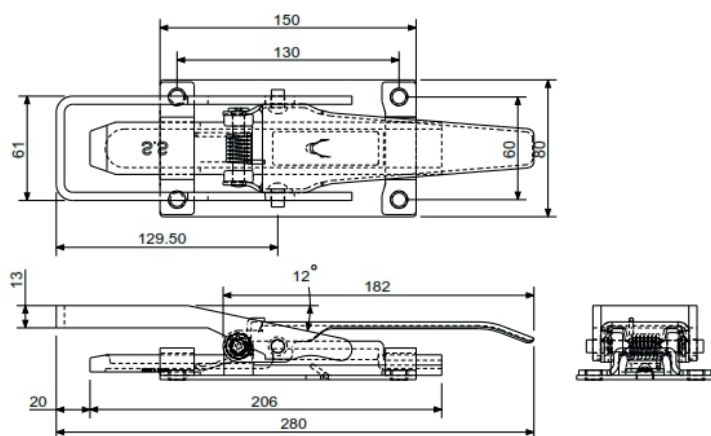
**Prod.#**

77.0057

**Zamknięcie burtowe, ocynkowane.**

Pendelverschluss, galvanisch verzinkt.

Pannel Latch, zinc plated.

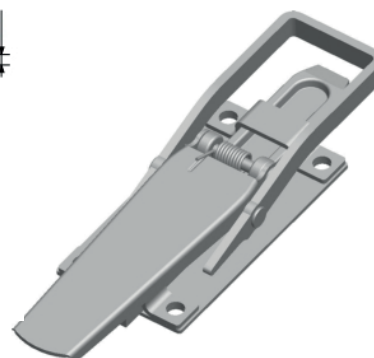
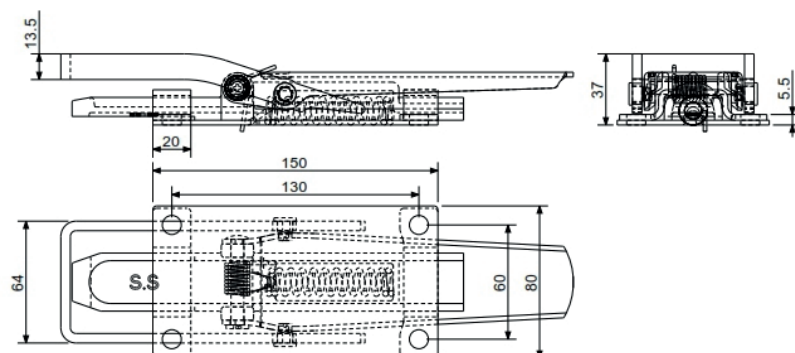
**Prod.#**

77.0058

**Zamknięcie burtowe, ocynkowane.**

Pendelverschluss, galvanisch verzinkt.

Pannel Latch, zinc plated.

**Prod.#**

77.0059

# ZAWIAS BURTOWY

## Scharnier / Hinges

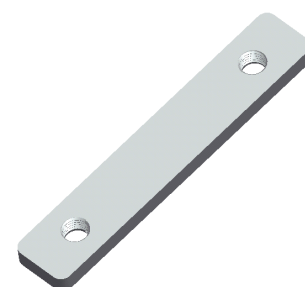
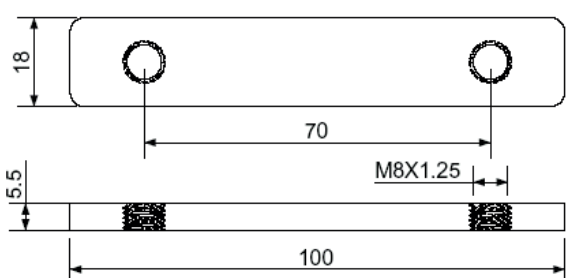
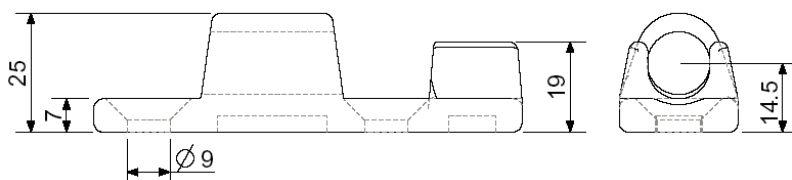
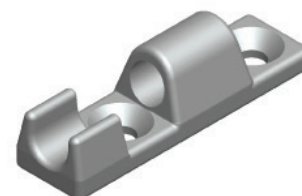
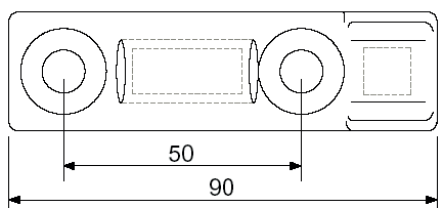
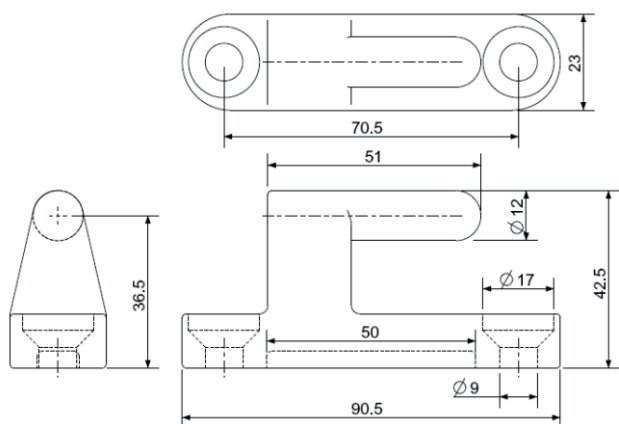
Zawias burtowy, komplet, przykręcany, ocynkowany.

Scharnier-Set, schraubbar, galvansich verzinkt.

Hinge-Set, screwable, zinc plated.

Prod.#

73.0033



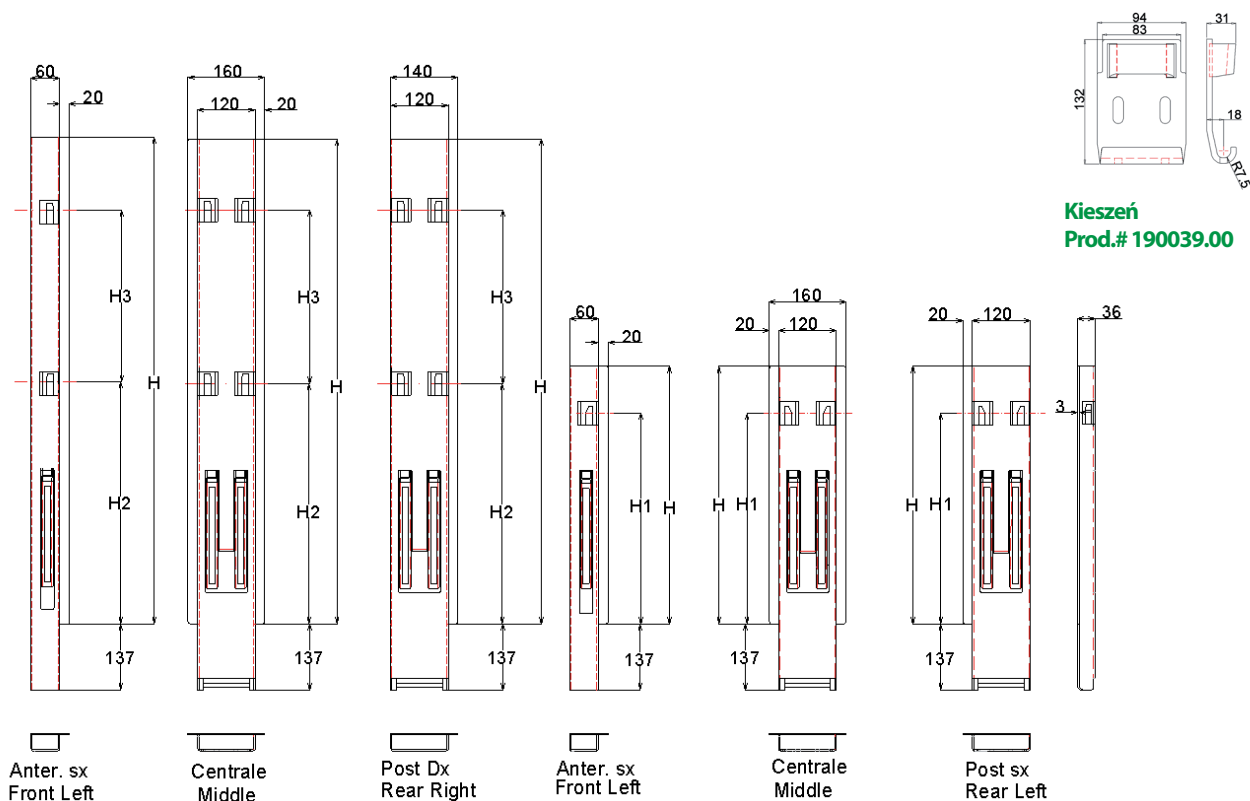
# SŁUPKI BURTOWE

## Rungen / Pillars

### Słupek.

Rungen S 36 für Pritschen (Bordwände S 25 mm).

S 36 pillars for plattform (Sidepanel S 25 mm).

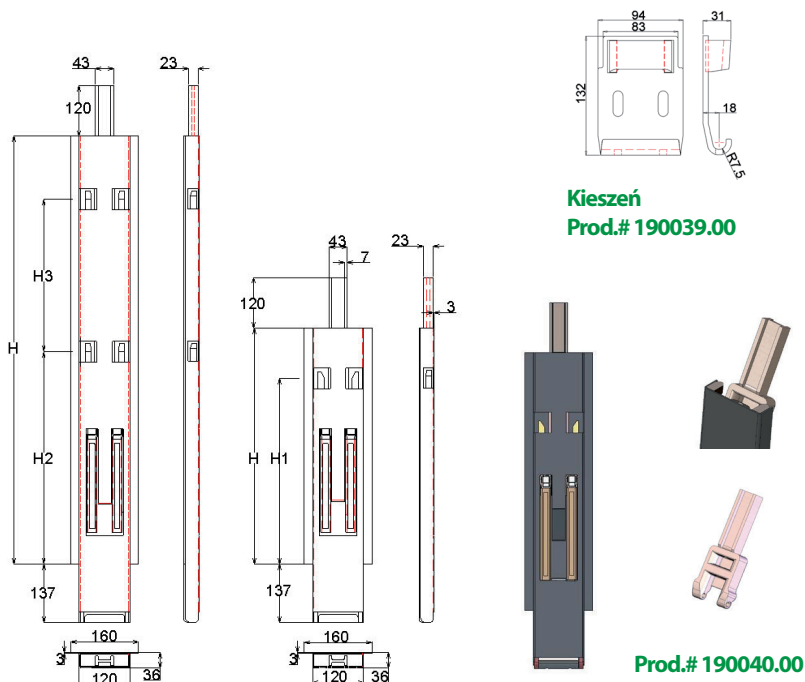


Prod.#	Nazwa	Wysokość	Prod.#	Nazwa	Wysokość
190807.20SX	przedni lewy	500	190817.20SX	przedni lewy	800
190807.20DX	przedni prawy	500	190817.20DX	przedni prawy	800
190808.20	środkowy	500	190818.20	środkowy	800
190809.20SX	tylni lewy	500	190819.20SX	tylni lewy	800
190809.20DX	tylni prawy	500	190819.20DX	tylni prawy	800
190812.20SX	przedni lewy	600	190822.20SX	przedni lewy	1000
190812.20DX	przedni prawy	600	190822.20DX	przedni prawy	1000
190813.20	środkowy	600	190823.20	środkowy	1000
190814.20SX	tylni lewy	600	190824.20SX	tylni lewy	1000
190814.20DX	tylni prawy	600	190824.20DX	tylni prawy	1000



**Słupek środkowy z przedłużeniem.**

Rungen S 36 für Pritschen( Bordwande S 25 mm).  
S 36 pillars for plattform( Sidepanel S 25 mm).

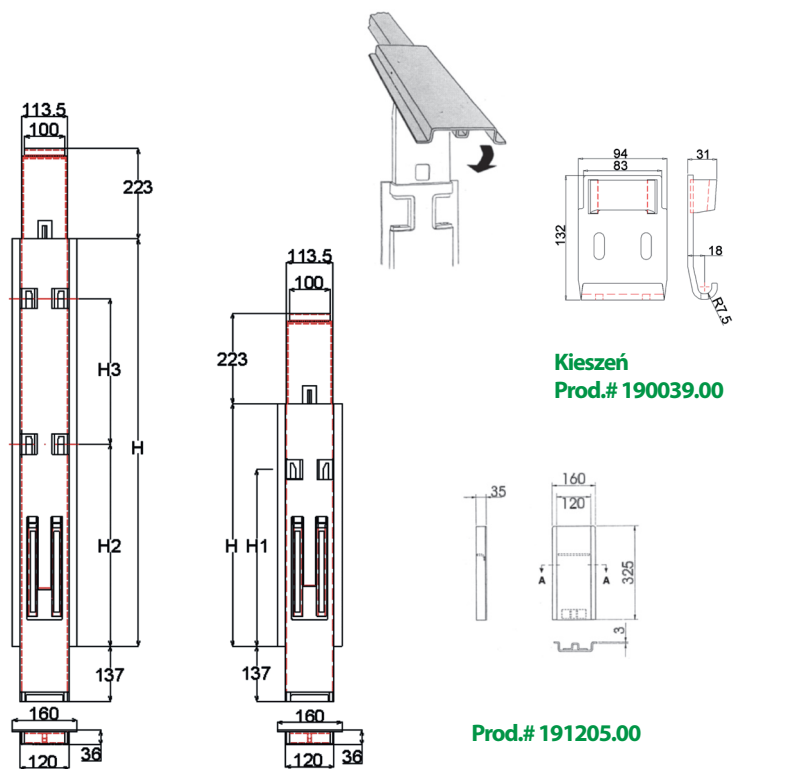


H	H1	H2	H3
600	450		
800	620		
1000		500	350

Prod.#	H mm	H mm
191207.20	500	600
191207.20	600	600
191208.20	800	800
191209.20	1000	1000

**Słupek środkowy z przedłużeniem.**

Rungen S 36 für Pritschen( Bordwande S 25 mm).  
S 36 pillars for plattform( Sidepanel S 25 mm).



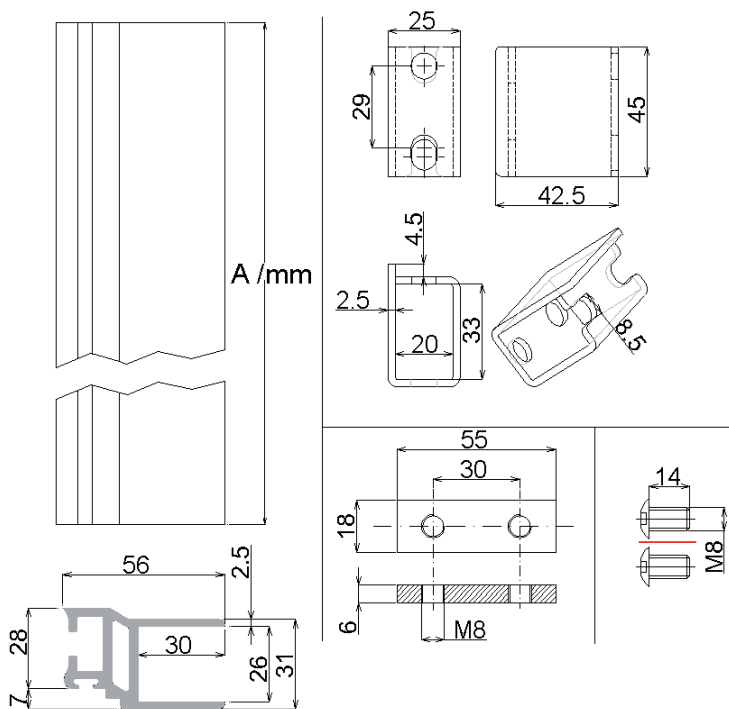
H	H1	H2	H3
530	450		
730	620		
930		500	350

Prod.#	H mm	H mm
191207.20EC	500	530
191207.20EC	600	530
191208.20EC	800	730
191209.20EC	1000	930

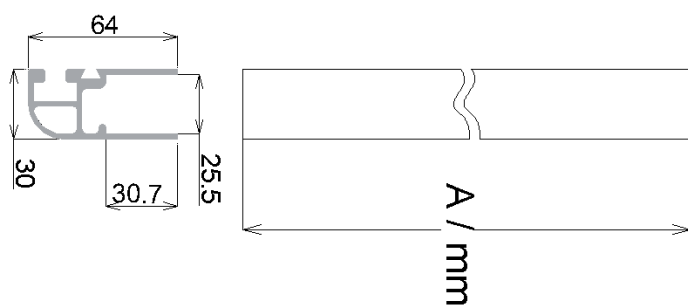
**Kieszonki - zamki do słupków.**

Rungen S 36 für Pritschen (Bordwände S 25 mm).

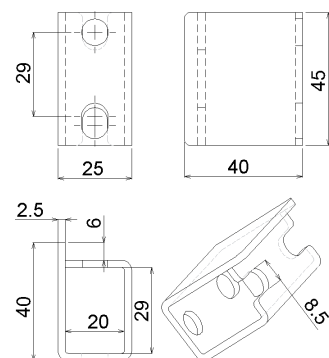
S 36 pillars for plattform (Sidepanel S 25 mm).



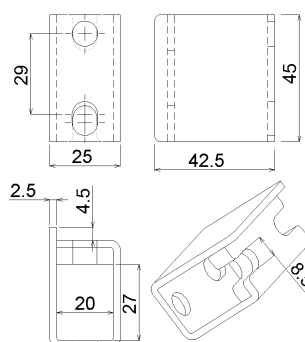
Prod.#	A / mm
193360.00	400
193361.00	500
193362.00	600
193364.00	800
193366.00	1000



Prod.#	A / mm
193400.00	400
193401.00	500
193402.00	600
193404.00	800
193406.00	1000



Prod.#
190048.01



Prod.#
190045.01